

# Annual Report

2022



# All in for kids' health.

We are the Movement of Many, different people from all walks of life. With one foot at the front line and one in the future, we're here for those who deserve our all. To help all sick kids, no matter where, no matter what.

## Acknowledgment of First Australians

Sydney Children's Hospitals Foundation acknowledges First Australians and recognises their continuous connection to country, community and culture. We are committed to helping close the gap to achieve equality in health and life expectancy for Aboriginal and Torres Strait Islander peoples.

## Contents



# 2

SCHF in review

# 7

Measuring progress

# 10

Impact



# 22

Reputation

# 26

Effectiveness

# 29

Culture



# 32

Jacob and Riley's story

# 34

Our people

# 38

Our generous changemakers



# 47

Roll of Honour

# 48

Milestones

# 56

Financial summary

SCHF in review

**FY22 Snapshot**

The Movement of Many

 **\$4.9m**  
Gift-in-kind

 **51,503**  
Donations

 **2,200**  
In tribute donations

 **3,901**  
Workplace giving donations

 **24,557**  
Individual donors

 **13,327**  
Corporate donors

 **86**  
Trusts and Foundations supporters

 **1,782**  
Community fundraisers

 **1,692**  
Kids Army Regular Giving donors

 **1,258**  
Volunteers

 **115**  
Gifts in Wills

 **2,160**  
Volunteer hours provided



Thank you for fighting for the health and wellbeing of all children in an ever-changing world.

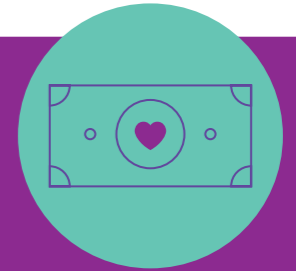
With your support, we raised **\$76,621,834\***

for all sick kids, no matter where, no matter what.

\*total includes \$1.5 million from the Minderoo Foundation for its instalment for the new Minderoo Comprehensive Cancer Centre which was given directly to SCHN due to the nature of the gift.

SCHF in review

**FY22 Impact Snapshot**



Thanks to your ongoing support, we donated \$40,226,553 towards research, clinical care and patient experiences, for the prevention or management of childhood illness or injury, with a focus on kids and families receiving treatment or care from services provided by Sydney Children’s Hospitals Network (SCHN). To help deliver further impact for SCHN’s staff and patients, in partnership with our Movement of Many, we were able to provide an additional \$4,996,711 in gift-in-kind support.

Research

**\$13,176,859**



Patient Experience

**\$3,162,675**



Clinical Care

**\$23,887,019**



## A message from our Chair



**Together, we can provide all children with access to the best healthcare - whenever and wherever they need it.**

There are not many organisations that can say they have positively impacted the lives of countless children and their families, but that is what we have achieved together.

The Sydney Children's Hospitals Foundation is one of the most trusted kids' health charities in Australia and your unwavering support has helped fund groundbreaking research, essential clinical care, capital works and equipment, and positive patient experiences across one of our country's largest children's hospitals and health services network.

This year, while we continued to navigate the uncharted waters of the COVID-19 pandemic and the unprecedented challenges it brought, we also took the opportunity to learn and grow as an organisation. I am deeply inspired by the resilience demonstrated by our community, and I know SCHF would not be where it is today without that strength and unreserved dedication to the lives of sick kids.

Thanks to the generous outpouring of support from our Movement of Many in FY22, we have raised an extraordinary (and record-breaking) \$76.6 million. Almost \$39 million has been donated towards critical children's health initiatives provided by the committed teams across the Sydney Children's Hospitals Network (SCHN). We also funded over

1,000 immediate and future research, clinical excellence and patient experience initiatives – all of which ensure the best care for sick kids today and better health for all children tomorrow.

When I joined the Board, I had my own ambitious goals for the organisation, and I am so honoured that my tenure has ended on such a high note.

I'd like to acknowledge the valuable contribution of my fellow Board Directors, Nicola Stokes as CEO, the Executive Leadership Team and our staff. Their steadfast commitment to supporting our donors and positively change children's health is testament to what we can do when we join together.

The coming year will no doubt bring its own challenges, but I am confident that with our dedicated supporters beside us, we will continue to rise and meet them head on. While I may no longer be serving you as Chair of the Board, rest assured, I will be cheering you all on from the side-lines, where I remain all in for kids' health.



**Duncan Makeig**

Chair  
Sydney Children's Hospitals Foundation

## A message from our CEO



**With one foot at the front line and one in the future of kids' health, we're changing one child's life today and future-proofing the health of all kids tomorrow.**

It has been six and a half years since I joined SCHF as CEO, with the mission to design and lead the expansion from supporting Sydney Children's Hospital, Randwick to raising funds for all five entities across Sydney Children's Hospitals Network.

This was a huge task, and one which necessitated brave and bold decisions at every level. The first of which was in recruiting and retaining ambitious, energetic and passionate staff to take on the journey with us. As we grew our team, we built it around new values and prioritised leadership development to empower our staff to take big steps, not only in their personal careers, but in the development of the organisation.

With the SCHF team put in place, I knew we could create an enduring, positive and everlasting impact on children's health that had not previously been imagined.

We implemented a unique and strong organisational structure which continues to guide our fundraising principles to this day. Despite the challenges and obstacles we've faced over the last few years, I'm incredibly proud of the industry-leading standards we've been able to not only maintain but elevate during this time.

While the strategy was in place, it was the execution which created both our competitive advantage and fundraising success.

We placed one foot in front of the other, gradually evolving SCHF into one of Australia's leading children's health charities raising \$76.6 million for kids' health – a milestone on which I am extremely proud to close this chapter of my journey.

As I begin the next phase of my career, I know I am leaving the organisation in a strong position for future growth. I have utmost faith in our Executive Leadership Team, each of whom demonstrate not only our values, but a drive and determination to make a life-changing impact on the lives of sick kids now, and into the future.

I remain in awe of our donors' enduring generosity and I will continue to be inspired by the clinicians and the kids SCHF supports. I look forward to being a proud supporter of the work that SCHF does, and although I will no longer be part of the journey, I will remain all in for kids' health, always.



**Nicola Stokes**

Chief Executive Officer  
Sydney Children's Hospitals Foundation

# Strategic Framework



# Measuring Progress

Our Balanced Scorecard includes external and internal measures – key indicators connected to how well we are achieving the goals set out in our Strategic Framework. We set a benchmark in FY19, which we use to measure and report on our progress as we move towards achieving our targets.

## External measures

<b>1 Impact</b> The fundraising revenue we generate reflects how well we have engaged our donors in our cause and the strength of our stakeholder relationships.	<b>FY19 benchmark</b> \$50m fundraising revenue	<b>FY22 target</b> \$65m	<b>Result</b> \$76.6m
<b>2 Reputation</b> This measures levels of trust among our donors and the community and reflects how well we deliver on our promises.	<b>FY19 benchmark</b> 89.4/100	<b>FY22 target</b> 92/100	<b>Result</b> 90/100

## Internal measures

<b>3 Effectiveness</b> This reflects how effectively we are running our organisation and how well we understand the drivers of cost and revenue.	<b>FY19 benchmark</b> Cost of fundraising: 23%	<b>FY22 target</b> 20%	<b>Result</b> 19.2%
<b>4 Culture</b> This reflects how true we are to our values and how well we are performing as an employer of choice.	<b>FY19 benchmark</b> Employee engagement: 64%	<b>FY22 target</b> 80%	<b>Result</b> 78%



# \$76,621,834\*

generated to help all  
sick kids, no matter  
where, no matter what.

\*total includes \$1.5 million from the Minderoo Foundation for its instalment for the new Minderoo Comprehensive Cancer Centre which was given directly to SCHN due to the nature of the gift.



## Strategy 1: Impact

**As the landscape of paediatric healthcare continued to evolve and our front line continued to be met with extreme uncertainty, our Movement of Many rose to the challenge in these extraordinary times.**

Transforming the lives of sick and injured children through clinical excellence, patient experience and cutting-edge research is why we exist. As we strive to create the biggest possible impact, we simply could not achieve these life-changing results without your vital support.

Support of any kind helps bring us closer than ever before to making our mission – healthy kids, whatever it takes – a reality. Whether you’ve hosted a fundraising event, left a lasting legacy as a gift in Will, donated your time by volunteering, got involved through one of our major appeals, supported us through workplace giving, or kindly provided gift-in-kind, you’re helping fight for the health and wellbeing of all children in an ever-changing world.

### The Movement of Many in action

#### Community rally together for sick kids

It was the end of an era, but the beginning of a new chapter for long-serving volunteer community group **Rally for Recovery**. After almost a decade of service, husband and wife duo, Ken and Sandra Sloan retired from their positions of President and Treasurer. This year marked 15 years of support for the South Coast community group who raised \$330,000, directed towards helping find a cure for childhood cancer.



### Support rolls on across NSW

The good times rolled with more than 500 trucks getting back on the road for the annual 2022 **Convoy for Kids**. As the largest community fundraiser for the Newborn and paediatric Emergency Transport Service (NETS), loyal supporters raised more than \$20,000 after a two-year hiatus due to COVID-19. While the convoy was back on the road, with the volunteer committee at the helm, there were three founding members – Cherylene Chidgey, Hughie Spinks and Keith Dwyer – who didn’t make the return, but will always be there in spirit.

### GYMA celebrates platinum jubilee of fundraising

Founded in 1951, the **Greek Young Matrons' Association** (GYMA) celebrated a milestone 70 years of support in 2021, taking their lifetime giving to a commendable \$1.4 million. Whether it’s a gala dinner, fashion parade or the annual debutante ball, the GYMA community continue to showcase their support to help all sick kids, no matter where, no matter what. From the Emergency Department to the Short Stay Surgical Wards and beyond, this tightknit group have created a lasting legacy.

### Establishing an honourable legacy

The darkest of days saw a community of diverse, strong women inspire change. In memory of three-year-old Sebastian, who sadly lost his life with COVID-19, **Mums 4 Refugees** rallied their network to drive hope – providing support and justice for refugees and people seeking asylum. Raising an inspirational \$42,101, half the funds will have a vital impact at the Refugee Clinic at The Children’s Hospital at Westmead.

### Inaugural event deepens cultural connections

In March 2022, SCHF held its inaugural networking and information night for **Culturally and Linguistically Diverse (CALD) Communities**. In collaboration with specialist multicultural agency Cultural Perspectives, SCHF helped to share information with our audience on who we are, what we do and how connected we are to so many diverse cultures and communities through the patients and families that utilise the services of the Sydney Children’s Hospitals Network (SCHN). We look forward to working with our CALD communities so that we can help deliver programs and solutions that meet our community’s diverse and nuanced needs.

### All in for kids’ health with Pherrus

Six years of continuous support has seen Sydney-based accounting firm **Pherrus** donate over \$400,000 to SCHF. While the impact of the COVID-19 pandemic saw some businesses reduce their support, Pherrus have remained a steadfast supporter, donating \$75,000 this financial year alone. The Pherrus team are proud of their support of SCHF, and the benefits extend into their team culture, showing that the inspiration of giving are reciprocal.



**\$13,176,859**

raised to fund ground-breaking paediatric research





## SCHF galas mark new milestones

### Silver Party helps unlock a new era in childhood cancer survival

Marking its milestone twenty-first birthday in style, Silver Party returned at Justin Hemmes' private residence 'The Hermitage'. Bringing together a guestlist of more than 300, a record-breaking \$3 million was raised in support of the Kids Cancer Centre at Sydney Children's Hospital, Randwick.

#### Committee

Maree Andrews (Chair)  
Naomi Parry (Deputy Co - Chair)  
Sarah Carroll (Deputy Co -Chair)  
Marly Boyd  
Stephanie Conley Buhre  
Kirsty Dahdah  
Camilla Freeman-Topper  
Tamie Ingham  
Kate Joseph  
Karin Upton Baker  
Barry Wafer



### Grace Gala celebrates new heights

Featuring a star-studded line-up, Grace Gala celebrated its fifteenth year by welcoming more than 460 guests to the Hyatt Regency to raise vital funds for the Grace Centre for Newborn and Intensive Care at The Children's Hospital at Westmead and Cerebral Palsy Alliance Research Foundation. An unparalleled \$1 million was raised for ground-breaking research into the prevention and treatment of cerebral palsy and newborn intensive care.

#### Committee

Lisa Ainsworth  
Claire Aristides  
Professor Nadia Badawi AM  
Angela Bishop  
Alexandra Bush  
Pepper Harris  
Alexandra Hopper Irwin  
Megan Khannah  
Rob White  
Alicia Wood



### Gold Dinner makes history

Australia's answer to the Met Gala saw 700 of Australia's leading philanthropists come together to celebrate a quarter-century of giving back. With a vision to transform the lives of sick children, now and for future generations, Gold Dinner 2022 broke national fundraising records, delivering an extraordinary \$9 million to support paediatric critical care – the largest amount raised at a gala in Australia.

#### Committee

Joshua Penn (Co-Chair)  
Linda Penn (Co-Chair)  
James Auswild  
Alina Barlow  
Sophie Curtis  
Francesca Duncan  
Earl Evans  
Benita Kam  
Oscar Martin  
Francesca Packer  
Joanna Pongrass  
Tara Rushton  
Monika Tu





### **A charitable legacy honoured**

James Oswald Fairfax AC (1933-2017) was a remarkable Australian. Born into the Fairfax media dynasty, he inherited power, money, and privilege, yet never lost sight of the importance of service, and giving, and always remained true to himself.

Shortly after he was born, James' life was saved from a potentially fatal congenital condition by skillful medical intervention. This gave him a lifelong desire to support all forms of children's medical care.

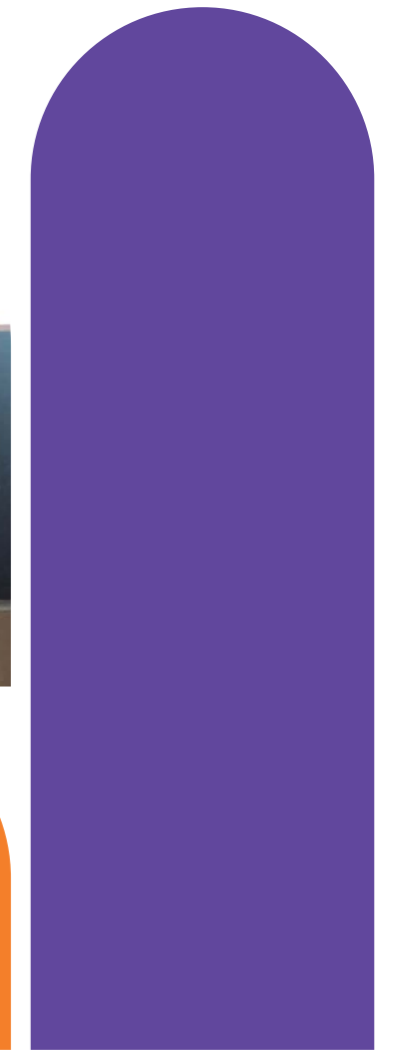
Just this year, his charitable foundation, James Fairfax Foundation, donated \$700,000 to three important causes at The Children's Hospital at Westmead (CHW): the James Fairfax Institute of Paediatric Nutrition, the team in the Dept of Gastroenterology to ensure their ability to undertake world-class research to improve the health and wellbeing of the children in CHW's care and an incredible art installation. This incredible donation brings James' lifetime support of SCHF to an outstanding \$4.4 million.

To honour James' unwavering dedication and generosity, and marry his passion for art and philanthropy, an illustrative artwork was installed on the doors to the Safe Assessment Rooms at CHW. This comforting installation also pays homage to James' beloved companions – his pets.

### **A grateful patient family gives back**

When his son reached remission, Yutian Bai wanted to find a way to say thank you to the committed health heroes that helped his family through one of their toughest journeys. So, Yutian and his close friend, Ma Zhoahua, gave their very first gift.

Their \$200,000 donation will support the critical research of Dr Neevika Manoharan at Kids Cancer Centre. Currently, Dr Manoharan is leading an international early phase combination clinical trial for paediatric patients with recurrent/relapsed primary brain tumours as well as contributing to the development of a national cancer predisposition study for patients and families affected by childhood cancer.



### Innovating the future of volunteering

June 2021 saw Australia plunge back into a COVID-19 lockdown, making it difficult for people to connect and engage in volunteering opportunities. SCHF expertly pivoted its volunteer program and created a weekly trivia hosted by primary and high school students to help foster relationships between our volunteers and encourage a bit of friendly competition.

This also saw SCHF begin its Virtual Volunteer Program, which allowed volunteers to work flexibly to support the team. The program was so successful that SCHF has now oriented and trained volunteers in Queensland, Victoria, the Australian Capital Territory, Western Australia and New South Wales.

Each of our volunteers are trained by our highly skilled Volunteer Leaders, who are committed to furthering the future of volunteering. Kylie Elliott, Volunteer and Supporter Engagement Lead, was selected to represent SCHF as one of only ten volunteer managers across Australia in the Volunteer Management Working Group for the National Strategy for Volunteering which will be Australia's first National Strategy for Volunteering in 10 years alongside colleague, Olivia Gatt. She will also represent SCHF on the Minister for Families and Communities, and Minister for Disability Services' NSW Volunteering Taskforce.

### Ward Angel, Josie, named NSW Volunteer of the Year

When Josie Dincel started attending the Pediatric Intensive Care Unit at The Children's Hospital at Westmead in 2015 with her own child, she began to take more notice of the little things. Are there colouring books available to keep her other children occupied while she speaks with doctors? Do they have music to listen to or games to play?

To fill the gaps, Josie started Ward Angels – a program where she works closely with the SCHF Volunteer team and her own community of volunteers to provide the small things that make a big difference to the lives of parents

and their sick children. This year, Josie and her Ward Angels raised over \$130,000 to provide entertainment, sensory toys, therapy equipment, baby monitors and mats, socks and bereavement boxes across the Sydney Children's Hospitals Network. Plus, Mother's Day gifts for every mum and Easter gifts for every child at The Children's Hospital Westmead, Sydney Children's Hospital, Randwick and Bear Cottage.

It's no surprise that Josie was named the 2021 NSW Volunteer of the Year by Fundraising Institute of Australia (FIA) for her compassion, tireless efforts and steadfast dedication.

Believing kids belong at home, not in hospital

## Curing Homesickness

Entering its third year, Curing Homesickness Ltd (CHL), continues to make significant contributions to improving the health of sick and injured kids across Australia and deliver against its goal of getting kids home from hospital sooner.

### Highlights for FY22

>\$1.5 million  
raised  
nationally

1.083 million bottles  
of Coles Mum's Sause  
Pasta Sauce and Pizza  
Sauce sold nationally

\$375,000  
raised for  
SCHF

Curing Homesickness has helped get kids home from hospital sooner by partly funding projects like virtualKIDS, Australia's first paediatric-specific virtual hospital developed by the Sydney Children's Hospitals Network. A multidisciplinary team of medical staff, social workers, dieticians, infectious disease specialists and child life and music therapists support patients virtually. This approach to healthcare helps keep more families together in the comfort and security of their home and community, truly revolutionising the way sick kids are cared for.

#### Curing Homesickness secures two-year partnership contract with Coles

CHL's partnership with Coles has enabled Mum's Sause to expand its range to four products since 2019, delivering strong sales. Since last year, this range has grown by +15%,

with the Bolognese product now ranking among the top 15 best-selling pasta sauces. With plans to support the Mum's Sause range and deliver incremental innovation, CHL believes this partnership is only going to get stronger. Testament to this is the signing of a new two-year commercial agreement with an option to extend beyond this timeframe.

#### Awards

CHL won Bronze and Silver at the 2021 APAC Effie Awards celebrating the best in marketing from across Asia and the Pacific. In total, 123 finalists from across 14 territories were in the running with 71 winners, including CHL. In partnership with CHEP Network, CHL received silver and bronze awards for the new Product or Service category for the Coles range of Mum's Sause and the Social Good (product) category.



## Review of our strategic goals

# Strategy 2: Reputation

**As one of the largest and most trusted kids' health charities in Australia, we exist to help provide all children with access to the best possible health care, when and where they need it.**

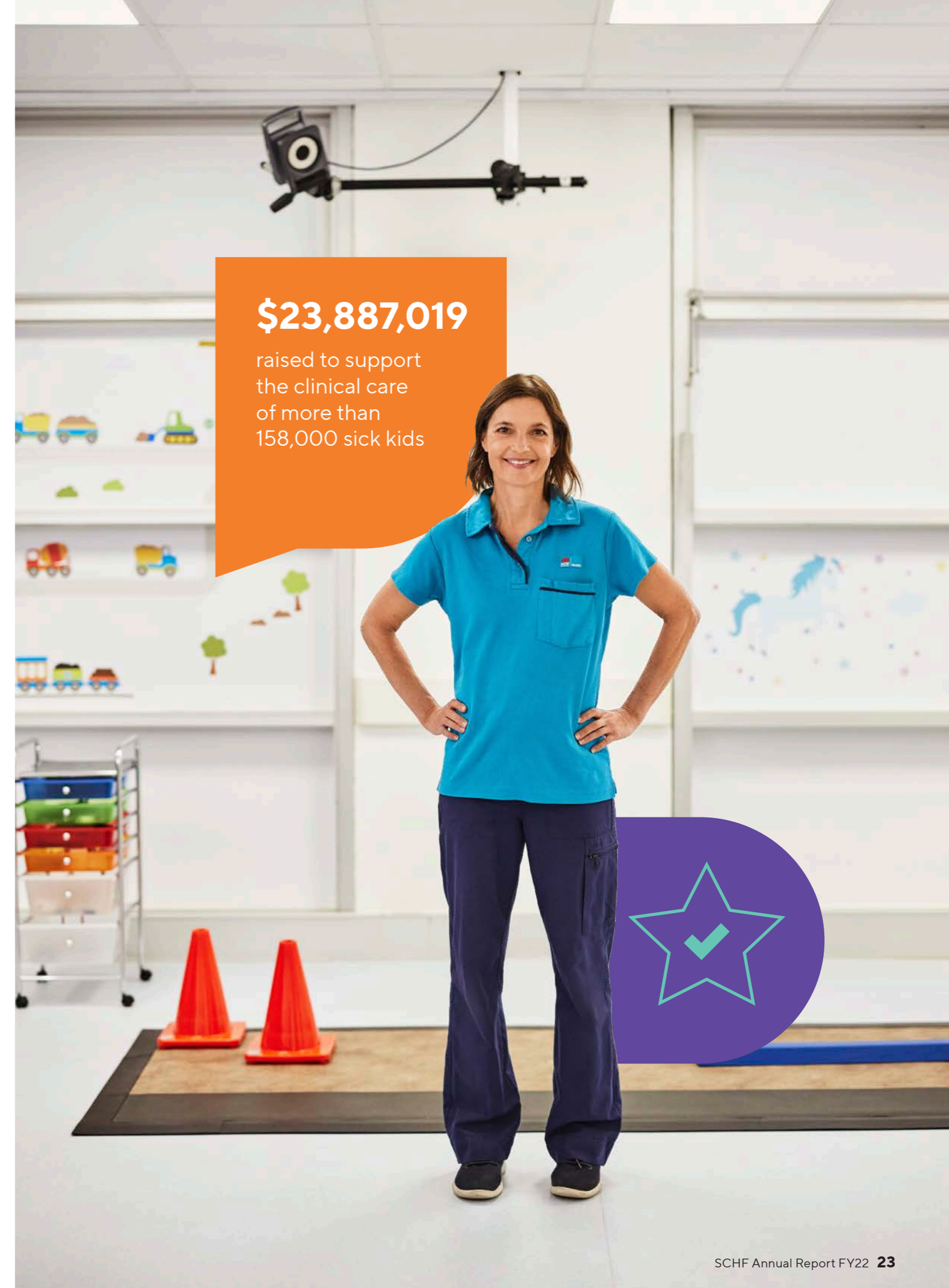
As a trusted charity, we consistently seek to reassure our community that their donated dollars are delivered to the front line of children's healthcare. We look to reputation research to help us understand what drives this trusting relationship with our Movement of Many, a single force of more than 70,000 donors.

We once again engaged RepTrak – a leading provider of data-driven reputation, brand, and environmental, social and governance insights – to survey our reputation. RepTrak analyses the sentiment of key stakeholders to deliver an overall reputation score based on questions about trust, respect, admiration and esteem. This survey helps us monitor the perception of our brand as we continue to inspire the community to join with us to be all in for kids' health.

Our benchmarked reputation score was 89.4/100 and we set a goal of 92/100 by 2022. In FY21, we surpassed our expectation with a score of 92.7, however in FY22 we saw this score take a slight drop to 90. While this score is slightly below our organisational goal, it still sits comfortably within RepTrak's top/excellent range.

This year's results continue to highlight the strong emotional connection between donors and SCHF, with awareness and engagement scores remaining high. Familiarity with SCHF has continued to improve among donors for the fourth consecutive year, now reaching 82%. This is an increase of +15% points since the first measurement in 2019 and a testament to our new brand which better reflects the aspirations of our team, our supporters and our impact on paediatric care.

Across the seven drivers of reputation, perceptions of SCHF have remained statistically stable, and Services and Citizenship remain the top two areas that our donors consider the most important. This tells us that our donors align strongly with our mission and place the most importance on SCHF making a meaningful contribution to, and impact on society by delivering high-quality services and being ethically operated.



**\$23,887,019**

raised to support  
the clinical care  
of more than  
158,000 sick kids



### Sydney Sick Kids Appeal

On Monday 23 May 2022, SCHF launched its annual Sydney Sick Kids Appeal, raising a record-breaking \$20.5 million in six weeks for our state's world-leading children's hospitals and paediatric services, because every child in hospital is a childhood on hold.

Partnering with 7News, the annual tax time appeal culminated with Sydney Sick Kids Day on Thursday 23 June where individuals, clubs, local businesses, schools, corporate partners and the media rallied behind sick kids, helping to get them back to what they do best – being a kid.

For some kids, childhood is far from what it should be. Instead of playdates there are appointments, instead of sleepovers there are stays and instead of firsts there can be lasts. Childhood is spent being rushed between hospital wards and outreach centres, undertaking tests and scans and missing the important milestones that every child deserves.

During tax time, SCHF, together with the community were able to be the difference between ordinary and extraordinary by supporting thousands of sick kids a year who walk through the hospitals' doors.



### Light Up Xmas Appeal

Nobody loves Christmas more than kids - the anticipation, the food, the family get-togethers and, of course, the visits from Santa! But for many kids, this time of year is spent in a ward, treatment room or outreach centre. From November 22, 2021, SCHF launched its Light Up Xmas Appeal to help give all sick kids a brighter Christmas.

From Westfield merchandise activations, Bunnings night markets, hanging a bauble on the virtual giving tree, shopping via a special silent auction, donating to the special Channel Nine Light Up Xmas Appeal broadcast and participating in Lights for Kids, SCHF raised over \$9 million for sick kids and their families.



## Strategy 3: Effectiveness

**We continued our commitment to the highest levels of efficiency and effectiveness throughout our operations in FY22. Despite the challenges of FY22, we managed within budget, delivered our largest beneficiary contributions to date and achieved a cost of fundraising of 19.2%.**

### Cultivating collaboration

As we moved forward with the hybrid working environment and the ongoing impacts of COVID-19, SCHF continued to capitalise on new systems and processes to deliver consistency and efficiencies across the Foundation.

Now into the second year of the SharePoint migration project, SCHF has seen a significant movement in the way we not only store information but also utilise the teamwork and flexible working opportunities such a system provides. The continuum of moving data, finance, P&C and other core business requirements into a cloud environment ensures there is accessibility in addition to the highest level of IT security. This has continued to transform our business processes within the new norm of hybrid workspaces.

The addition of an intranet has allowed us to share common resources, continuing to build cohesion and drive further efficiencies.

### Operational excellence

Over the past year, we've been finalising the implementation of an integrated finance system to deliver flexible reporting, so we can demonstrate our impact in an effective and meaningful manner.

The new finance system, which has not been without its challenges during an unfortunate extended implementation, greatly enhances our reporting capabilities. This continues to improve transparency and accessibility; improve our reporting to donors; and enable our primary beneficiary, SCHN, to tell us more easily about the impact of the funds we have donated.

### Governance and risk

SCHF takes security and privacy very seriously and is constantly mitigating the opportunities for cybercrime in the broader digital world.

We continue to conduct mandatory privacy and cyber security training courses for all staff members, equipping them with the resources they need to be compliant and respectful in data collection, and to mitigate the risk of a data-related breach.





## Review of strategic goals

# Strategy 4: Culture

**We are thinkers and doers, planners and creators, helping hands and guiding lights. We are drawn from different backgrounds and perspectives – what makes us different makes it work.**

### Fostering staff connections on the screens and beyond

Lead by the CEO and ELT, SCHF's Foundation Forums were delivered virtually throughout FY22 with the first in-person Forum taking place in Q4 of FY22. This was the first time all our unstoppable changemakers were under one roof in almost two years! We reconnected with each other and got to know our new starters who had begun their SCHF journey completely remotely. We recognised our employees by celebrating their birthdays, service with SCHF, and for demonstrating the SCHF core values.

SCHF's Culture Club also did an incredible job of keeping our team connected by hosting several virtual and, where possible, in-person events. These included a Vivid Photo Walk, in partnership with Nikon Australia, our very first EOFY social event and monthly team celebrations.

### Transformational project begins to become an even better place to work

The impact of our work is very important, so we want to make sure that all our employees have a strong value proposition for being part of the SCHF team. COVID-19 undoubtedly changed the way we work, therefore presented the right opportunity for SCHF to begin the re-design of its Employee Value Proposition (EVP) to ensure we are attracting and retaining

the very best talent. In FY22, we formed the EVP Development Board with five sub-committees led by our staff. The EVP project work will continue to run through the next financial year and the project is anticipated to be delivered by FY24.

### Expanding our Movement of Many

We are a community of unstoppable changemakers, a Movement of Many, fighting for the health and wellbeing of all children in an ever-changing world. After a record-breaking year of fundraising, we are growing our team. This year, we developed plans to expand our workforce ready for the new financial year. With almost 20 new positions created for FY23, we are excited to see our Movement of Many grow, as we continue to make an even greater impact on kids' health.

### Ensuring staff voices are heard

In September and March, SCHF conducted two engagement surveys to gauge our employees' feelings about working for us. At SCHF, we know how important it is to ensure all staff have a voice and feel comfortable sharing their experiences and insights into the SCHF culture. Pleasingly, the most recent survey showed that 78% of employees are engaged at work, with our top scoring factors being 'Teamwork & Ownership', 'Learning & Development', and 'Social Connection'.



This snapshot is from FY22 statistics provided by SCHN.

# 158,200 children received medical care

**91,324**  
Emergency Department presentations

**3,616**  
emergency transport retrievals by NETS

**49,951**  
hospital admissions

**3.02 days**  
average length of stay

**101,000**  
coffees sold at Sunny's Cafe

**17,836**  
operations

**168**  
Bear Cottage admissions



Grace, 5 with mum, Kimberly and dad, Andy enjoying time at Bear Cottage.

**“We struck the lottery with Jacob and Riley’s doctors. They’re not just brilliant doctors, but also beautiful human beings.**

**If you have to be in this situation with both kids, we couldn’t have asked for better people to be supporting us and our children”**



**“Your donations keep things moving forward and give kids like mine a chance. Your support today will make a family’s hospital experience tomorrow that little bit brighter.” – Brooke, Jacob & Riley’s mum.**

## Two sick siblings, one big hospital family

**When a Sydney family’s world was torn apart twice, they were enfolded by a caring and expert multi-disciplinary team that stretched right across the city – and it made all the difference.**

To have one child born with a severe, long-term illness, then another diagnosed with a life-threatening condition is unimaginable for most parents – but it’s a reality for Brooke and Travis.

When Jacob was born, his first-time parents doted over their new baby boy and celebrated every milestone- his first stare, his first smile and then his first giggle. But six months in, they noticed Jacob’s arm and leg muscles would often go stiff and his head would bend forward strangely.

After countless tests, doctors broke the unexpected news that Jacob had a rare disorder called infantile spasms, a severe form of epilepsy that is very hard to control and can cause intellectual disabilities.

By the time Jacob was 20 months old, the Neurology team at The Children’s Hospital at Westmead had explored many different treatment options including removing a small section of his brain, but unfortunately, nothing stopped his seizures.

It wasn’t until Jacob was three-and-a-half years old that he received his definitive diagnosis: Lennox-Gastaut syndrome – an extremely rare form of epilepsy with no known cure. Since then, he continues to endure hundreds of seizures each and every day. This has caused Jacob permanent brain damage.

Three years later, Brooke and Travis welcomed a beautiful healthy little girl, Riley. At that moment, the family could never have imagined just two-and-a-half years later, they would need to rely on another team at Sydney Children’s Hospital, Randwick.

It was when Riley developed two urinary tract infections, that a routine ultrasound unveiled the start of another scary chapter – a rare kidney cancer.

The strong family of four found themselves in a very unique position, one that many families are fortunate to never find themselves in. They had one sick child receiving long-term care at The Children’s Hospital at Westmead, and the other undergoing early-stage cancer treatment at Sydney Children’s Hospital, Randwick.

With Riley, now in remission, and Jacob, loving attending school, life has stabilised although hospital visits are still a routine part of their lives.

## Board of Directors



**Duncan Makeig, Chair**

Appointed 23 October 2007



**Simon Hickey, Vice Chair**

Appointed 27 October 2009



**Wayne Mo, Director**

Appointed 21 February 2019



**Matthew O'Meara,  
Director**

Appointed 26 October 2010



**James Brindley, Director**

Appointed 19 April 2016



**Tom Butcher, Director**

Appointed 1 June 2018



**Danny Rezek, Director**

Appointed 16 November 2021



To learn more about the  
Board of Directors, please  
scan the QR code



**Gina Cass-Gottlieb, Director**

Appointed 14 August 2012



**Dr David Court, Director**

Appointed 8 November 2018



**Elizabeth Crouch AM, Director**

Appointed 3 March 2020



**David Nott, Director**

Appointed 25 November 2020

### Introducing Mr. Len Chersky

We are delighted to welcome Len Chersky to the SCHF Board. Following a comprehensive recruitment process, Len was formally appointed to the Board on 8 August 2022, where he was also unanimously nominated to be the new Chair.



## Executive Leadership Team



**Nicola Stokes,**  
Chief Executive Officer

Appointed January 2016



**Kate Ferguson, General  
Manager - Engagement**

Appointed September 2020



**Yvonne Stewart, Greenlight  
Program Director**

Appointed January 2015



**Mariam Hares, People and  
Culture Manager**

Appointed May 2022



**Stephen Taylor,**  
Chief Financial Officer

Appointed May 2021



**Colin Allen, General  
Manager - Philanthropy**

Appointed September 2021



**Erica Nelson, Head of  
Leadership Development**

Appointed March 2020



**To learn more about the  
Executive Leadership Team,  
please scan the QR code**

## Our Patron



**Her Excellency the Honourable  
Margaret Beazley AC KC,  
Governor of New South Wales**

Appointed 2022

Her Excellency is the King's representative within New South Wales, our formal head of State. Playing an integral constitutional, ceremonial and community role in NSW, she shares a passion for what SCHF stands for and the work we do for sick kids.

"Earlier this year, I was delighted to accept the request from the Sydney Children's Hospitals Foundation for Vice-Regal Patronage, having seen first-hand the impact of the Foundation in supporting the health and wellbeing of sick kids across New South Wales. In doing so, I am pleased to join you as a part of the Movement of Many, your wonderful community of donors, supporters, friends and partners, as together we go all in for kids' health."

Her Excellency is the 39th Governor of New South Wales, commencing her five-year tenure on 2 May 2019. Prior to her appointment as Governor, Her Excellency enjoyed a long and distinguished law career spanning 43 years, during which time she served as a role model for women in law at both the state and national level.

### THANK YOU, LES

Following a successful six-year tenure, Emeritus Professor Les White AM stepped down from his role as our inaugural Patron in March 2022. He will continue to provide guidance to SCHF in a broader role as an Ambassador for children's health and we are delighted to continue our strong partnership with him.

Les was Executive Director of Sydney Children's Hospital, Randwick from 1995 to 2010, and had a stellar clinical and academic career, with a focus on childhood cancer. His leadership has national and international reach, and his dedication to improving children's health spans more than five decades. Les is passionate about the impact of philanthropy in transforming the future for young patients and their families and he is an inspiration to our donors and supporters. Thank you, Les, for everything you have done so far to support SCHF and for going all in for kids' health.



## Thanks to our generous changemakers

As one of Australia's largest and most trusted children's health charities, we make sure funds raised go directly to the front line of children's healthcare. Your support creates both immediate impact and lasting change. This is only possible thanks to the thousands of generous supporters who are all in for kids' health.

### \$5,000,000 - \$9,999,999

Estate Late Janet Ruth Gormly  
Estate Late Roslyn Margaret Welsh  
Medich Foundation

### \$1,000,000 - \$4,999,999

Coles Group	Estate Late Margaret Betty Moore	Sargents Pies Charitable Foundation
Estate Late Aram Ohanian	Estate Late Warren John Hall	The Wiggs Foundation
Estate Late Christina Armour	Minderoo Foundation	

### \$500,000 - \$999,999

A Bear Affair 2022	Estate Late Jennifer Margaret Codling	James Fairfax Foundation
Bio Island	Estate Late Josephine Simelius	Symbio Wildlife Park
Campbell & Francesca Duncan	Estate Late Norman Keith McPherson	The Minton Family Foundation
Costco Wholesale Australia	Estate Late Valmai Catherine Sutton	The Penn Family, Lowes Menswear, and its suppliers
Emerald Ball 2022	Grahame Mapp Family Foundation	The Walt Disney Company - Australia & New Zealand
Estate Late Arthur Frank Neill	Hearts & Minds Investments Limited	
Estate Late Edwin David Wolfe		
Estate Late Halyna Chrapacz		

### \$250,000 - \$499,999

Big W	Estate Late Dorothy Merle Scrivenor	Macquarie Bank
Camp Quality	Estate Late Isobelle Mary Galbraith	Red Storm Holdings Pty Ltd
Carat	Estate Late Robert David McKinnon	Redkite
Caroline McBride	Flicker of Hope Foundation	Shaw and Partners Financial Services
Coogee Bay Hotel	Foxtel	Sporting Chance Cancer Foundation
Dinnerly	Highland Property Group	The Lewis Foundation
DOOLEYS Lidcombe Catholic Club	Humpty Dumpty Foundation	The Profield Foundation
Earl Evans	Kids Rehab Golf Day	
Estate Late Beatrice Jean McKay	Kids with Cancer Foundation	

### \$100,000 - \$249,999

400 in 4 Charity Ride	Estate Late Pamela Dorothy Walker	Justin Ryan
Andromeda & Sean Neale	Estate Late Peter Stephens	Karellas Group Iga
Australian Fund Managers Foundation	Estate Late Wai Man Sin	Kay Van Norton Poche
Bennelong Australian Equity Partners (BAEP)	Faxmo Pty Ltd	Khaza Nominees Pty Ltd
BIC Australia	Fight Cancer Foundation	Luke Hepworth
Bulgari	Fire and Rescue NSW	Manildra Foundation
Doves Nest Foundation Pty Ltd	Francesca Packer Barham	Mayrin Group
Eley Griffiths Group	GD Equities - Shaw and Partner Financial Services	Melissa Lewis Foundation
Estate Late Adolfine Hinterholz	Glow Capital	Merivale
Estate Late Allen Sampson	Hancock Prospecting Pty Ltd	Miranda Kerr
Estate Late Ann Whetton	Hyundai Help for Kids	Modus Projects Pty Ltd
Estate Late Clare Baker	Jean-Dominique & Rianna Huynh	Nassib Thoumi
Estate Late Judith Ann Fritz	Jeremy & Olivia Bond	Nick Molnar
	Justin Hemmes	Nicklas Teicke
		Nine Network Australia Pty Ltd

Oceana Australian Fixed Income Trust  
Optus  
Oxanda Education  
Pallion Procurement  
Paradice Investment Management  
Perpetual Foundation  
Quentin & Kim Flannery  
Rally For Recovery Inc  
Rinehart Medical Foundation  
Robert & Libby Albert  
Ryan & Claire Stokes  
Saunders Family Foundation  
Scape Australia Management

Sell & Parker  
Silk Logistics Holdings  
Sydney Airport  
Team Simon Foundation for Cystic Fibrosis  
Teicke Family Foundation  
The Ainsworth Foundation  
The Arnott's Foundation  
The Auswild Family  
The Balance Foundation  
The Bazouni Family  
The Freedman Foundation  
The Goodridge Foundation  
The John and Lois Turk Charitable Gift

The late Colin and Marie Ward  
The Next Generation  
The Petre Foundation  
The Redan Foundation  
The Rotary Club of Sydney Cove  
The Shaw Foundation  
Tony McCullough Foundation Trust  
Tour de Cure  
Ward Angels  
Western Earthmoving  
Woodhead Family Benefaction  
Yutian Bai

Estate Late Eileen Doris Gabriel  
Estate Late Evan Frederick J Williams  
Estate Late Frederick Harris  
Estate Late Garfield Edwin Manuel  
Estate Late Janna Albertha Dikkers  
Estate Late Kenneth Shorter Mitchell  
Estate Late Lynne Allison  
Estate Late Marjorie Elaine Smith  
Estate Late Mavis Stephens  
Estate Late Olga June Marks  
Estate Late Robin Bernice Potter  
Estate Late Shenay Yusuf  
Estate Late Wilfred Richard Tuck  
Estate Late Yvonne Mavis Byrne  
Flannery Family Foundation  
Greek Young Matrons' Association  
Hasbro Australia Ltd  
Helen Economus  
Henry & Wendy Rose  
IMC Pacific Foundation  
Intrepid Travelling Troupe  
ITS Management  
June Oriel

KidzFix Foundation  
Lady Fairfax Charitable Trust  
Liliane Novak  
Lindt & Sprungli (Australia) Pty Ltd  
Lynch Group  
Mattana Holdings Pty Limited as trustee for Moshal Charitable Trust  
Mazda Foundation  
Nicky & Andrew Oatley  
Order of the Eastern Star - Mortdale Chapter, No. 36  
Orthodontics At Tamworth  
Osmal Holdings Pty Ltd  
PayPal Giving Fund  
Perpetual Foundation - The Page Family Endowment  
Pherrus Financial Services  
Phillip & Coreena Cochineas  
PKU Association of NSW Inc.  
Race for Grace 2021  
Rapid Relief Team  
Rizer Pty Ltd  
Scentre Group Limited  
Skamvougeras Family  
St Wanas Coptic Orthodox Children Charity  
Suan Yeo  
Summer Dsze  
Supagas  
The Adamsas Family

The Howarth Foundation  
The Leading Hotels of The World  
The Luscombe Family Foundation  
The Mill House Foundation  
The National Philanthropic Trust  
The Power Family  
The Research Foundation, Cerebral Palsy Alliance  
The Ruth Marie Sampson Foundation  
The Tie Dye Project  
The Wales Family Foundation  
Vinva Foundation Company Pty Ltd ATF Vinva Foundation Private Ancillary Fund  
Waratah Education Foundation



**\$50,000 - \$99,999**

65K for 65 Roses  
Aaron Powell  
Ace Competitons  
Adam Blumenthal  
AGS World Transport  
Amber & John Symond  
APCD Pty Ltd  
Arc UNSW Student Life  
Asthma Australia  
Bennelong Asset Management  
BYHEALTH Co Ltd  
Canberra Grammar School Parents and Family Association

Cassandra Nicholls  
Champion Family Foundation  
Children's Tumour Foundation of Australia  
Christopher & Elsa Flynn  
Cie And Kiko Pty Ltd  
City Tattersalls Club  
Clarins  
CNX2Sports  
Commercial Travellers Cot Fund  
Coombes Property Group  
Craig & Nerida Caesar  
David Cable  
Dell Technologies

Ducman Allen Yip  
Dunmain Pty Ltd  
ECOYA Limited  
Elizabeth & Patrick Keenan  
Ern Bickford  
Estate Late Allan Archibald Rowling  
Estate Late Allan St Ruth Knights  
Estate Late Anthony Bartholemeuw Nicholas Van De Putte  
Estate Late Doreen Collison  
Estate Late Doris Mercy Bassell



## \$10,000 - \$49,999

A I Topper and Co	Autotech Automotive Services	Camilla And Marc Operations Pty Ltd	DELL EMC Australia	Estate Late Lynette Margaret Markham	Good360
ACCO Brands	B.Braun Australia	Camilla Freeman-Topper	Department of Communities and Justice – Youth Opportunities	Estate Late Meila Diane Hutchinson	Goulburn & District Cystic Fibrosis
ACG Air Conditioning	Baillie Family Foundation	Canadian Imperial Bank of Commerce CIBC	Devcon Civil PTY LTD	Estate Late Mollie Elizabeth Traynor	Graham & Joanne Russell
Adès Family Foundation	Barrie & Emma Nesbitt	Carapiet Foundation	Device Technologies	Estate Late Norma Alma Smith	Graham Robey
Adrian William	Bart Ward	Carla Zampatti Pty Ltd	Dick and Pip Smith Foundation	Estate Late Violet Falls	Greg Hayes
AFW	Bayard Foundation	Carmel Harrington	Donna Ng	Estate Late Winsome Steele Halliday	Gresham Partners Limited - Sydney
Alex & Stephanie Cornish	Baydon & Megan Fischer	Carnival Cruise Lines Australia	Earthworx Group	Estate of John Craggs	H & R Israel Fund
Alexandra Goodfellow	BDE Group	Cerner Corporation	Eleanor Dunn	Ethika Group Pty Ltd	Haverick Meats
Allens Linklaters	Belinda International	Certis Group	Elev8 Design & Development	Eunjee Kim	HealthShare NSW
Amazon Australia	Ben & Marie Ritchie	Chase Farm	Elizabeth Adams	Event Hospitality & Entertainment Limited	HomeWorld Group of Companies
Amyson Pty Limited	Ben Griffiths	Child’s Play Charity	Elizabeth Hassell	Fivex Services	Hope for Ollie
Anastasio Papanastasiou	Ben Hewlett	Christian & Shona Verges	Endeavour Energy	Forever Johnno	Hourigan Family Trust
Andrew Corkhill	Ben Ingham	City of Sydney RSL Club Ltd	Epoch Capital Pty Ltd	Fortnum Foundation	In Memory - Zoe Bunny
Andrew Killion	BHAG Management Pty Ltd	Clorox Australia Pty Ltd	Estate Late Arthur Raymond Court	Fresh Produce Film Co Pty Ltd	Independent Warehouse Solutions Logistics
Andrew Quine	Bianca Brown	Coffee4Kids	Estate Late Clarence Ray Davies	Gairy St Clair	Infinity Property Agents
APPTIO Australia Pty Ltd	Black Diamondz Property Concierge	CommBank Staff Foundation	Estate Late Doreen Helen Bullivant	Gary & Janine Wolman	Interior Construction Group
Arab Bank Australia Limited	Blackmores Ltd	Convoy For Kids Sydney Inc	Estate Late Geoffrey Robert Burfoot	General Pants Group	IPC Projects
Aristides Fine Jewels	BNP Paribas	Dainere’s Rainbow Brain Tumour Research Fund	Estate Late Geoffrey Vernon Shattles	George & Christine Penklis	Jacky Yencken
Ascentier	BNT Management Pty Ltd	Daniel & Jess Shand	Estate Late Hazel Fay Hawkeswood	George & Janet Parker Memorial Trust (EVOLHOPE)	James & Jessica Auswild
Assembly Label	Boating Syndication Australia	Danny Azzi	Estate Late Irene May Stephenson	George Karalexis	James & Susie Tonkin
ATLAS by LJ Hooker	Borgnis Street Residents	David & Vanessa Scarf	Estate Late Johanna Krige Cronje	George Massar	James Swete
Atlas LJ Hooker - The Michael Coombs Team	Bourke Gibbons	David Adams	Estate Late John Napier Aitken	Glenorie Bakery	Jane & Richard Freudenstein
Ausgrid	Brad and Karina Ezekiel - Wyatt’s Walk	David Allingham		GLINTECH	Jason & Danni Murray
Australia Post	Brian Topper	David & Gillian Gale		Good Game Well Played (GGWP)	Jason Huljich
Australian Children’s Music Foundation	Buildcorp Group Pty Ltd	David Topper			Jean-Marc & Kirsten Carriol
Australian Stockbrokers Foundation Ltd	C & M Antoniou	Davies Family Foundation			Jemena Limited - Head Office
	Cam Donation				Jenny Rana

John Holland CPB Ghella Joint Venture	Liangrove Foundation	Monika Tu	Paul & Anne Masi	Rio's Legacy	Storytime PODs
John Manos	Little Big Steps	Moove Media Australia	Peg Dodd	Robert & Judy Phillips	Strada Investments Pty Ltd
John Schaffer	Louis Vuitton Australia and New Zealand	Moray & Agnew Lawyers	Perpetual Foundation - Centenary Foundation - Estate Late Violet Falls	Robert Oatley Vineyards Pty Ltd	Studio 100 Photography Australia
John Wilson	Lucy Messara	MTO Apparel	Perpetual Foundation - Centenary Foundation - The Permanent Trustee Foundation	Robert Priestley	Subaru Australia Pty Ltd
Jordan Sukkar	M.A.C Cosmetics	Mums 4 Refugees	Perpetual Foundation - George and Joyce Graves Endowment	Rotary Club of Belrose	Sunny Side Up Charity Gala
Joseph Fayyad	Maatouks Racing Group	MWP Coating	Perpetual Foundation - J & G Bedwell Endowment	Rotary Club of Mosman	Supercar Advocate
Judith Neilson	Macoun Charitable Foundation Pty Ltd	My Space Pty Ltd	Perpetual Foundation - Sibley Endowment	Rotary International	SYDLUG Fairy Bricks LEGO Fan Club
Jufron Investments	Madison Marcus	Nadia Badawi & John Keogh	Perpetual Foundation - Sir Robert & Mollie Askin Charities Trust	Royal Motor Yacht Club of NSW Ltd	Sydney Civil Pty Ltd
Justin Chan & Isabel Ng	Madison Skye Pty Ltd	Narrabeen North Public School	Perpetual Foundation - The JB Bedwell Endowment	Royal Wolf Trading Australia Pty Ltd	Sydney Kids Committee
Justin Topper	Malcolm Stephens	Nell & Hermon Slade Trust	Perpetual Foundation - The K&G Gluck Trust	Russell Karlson	Sydney Kings
Karinvir Singh Gill	Manildra Flour Mills	Network Ten	Piety Group	Salesforce Foundation	Sydney Trains
Kate & Dominic Roche	Maree & Peter Andrews	New Century Group Australia	Pronat Group Australia Pty Ltd	Sandhaven Foundation	Tak Fuk Investments Pty Ltd
Katherine Trotter-Mo	Marc & Nicole Freeman	News Corp	Q Diamonds	SASH	Tamie Ingham
Katrina Halliburton	Mark Coulter	Nicholas Eddy & Company	Rafalog Pty Ltd	Scene Media Consultancy	The Alfred & Jean Dickson Foundation
Kelly Morgan	Mark Moran Group	Nicolas Pongrass	Raffl Oz	Scott & Alina Barlow	The Children's Help Foundation
Kevin Kalinko	MARS Wrigley Confectionary	Nielsen Foundation	Raghubinder Gill	Scott Gibbons	The Corio Foundation
Kieran & Anna Lahey	Matt Barrie	NSW Police Force Headquarters - Payroll Governance	Ramona Roach	Seven Miles Coffee Roasters Pty Ltd	The Cornucopia Committee Inc
Kim Maloney	Matt Thomas	NSW Rural Fire Service	Ray White - Double Bay	Silver Raven Pty Ltd	The Finger Family Foundation
Kimalo Foundation	Matthew Peter Trainor Family Trust	Olsson Property Group	Richard & Jade Coppleson	Sir Joseph Banks Hotel	The Graf Family Foundation
King & Wood Mallesons	Matthew Reid	Olsson Property Group	Richard Mo	Smith Charitable Fund	The Jackson Foundation
King Living Foundation	Matthew Yencken	Orchard Marketing Pty Ltd	Ricky Richards Pty Ltd	Smithfield Sydney Baseball Lions Club	The John Paul Foundation
Kingvest Pty Ltd	Max Media Lab	Ottomin Foundation		Spin Master Australia Pty Ltd	The Lewis Land Of Companies
Kira & Brea Comino	Maxim Krok	Pallet Logistics		St Demetrios Greek Orthodox Church	The Macintosh Foundation
Krinklewood Estate Pty Ltd	McCabes	Pans Australia Pty Limited		Stanley Ho	The Margaret Mills Charitable Trust
Kwan Chun Presbyterian Church	McCarroll's Automotive Group	Papamanuel Family		Steadfast	The Schwinghammer Foundation
Lawrence & Sylvia Myers	Megan Grace	Paragon Steel Fabrication Pty Ltd.		Stepping Stones Therapy for Children	
Leah & Alex Bischoff	MetLife	Paris Neilson			
Leda Holdings	Mitsubishi Electric Australia Pty Ltd	Patrick Teodorowski			



The Sydney Brick Paving Company	Turnbull Foundation	Westfield Warringah Mall
The Tie Dye Project	Unilever Australia Trading Ltd.	Westpac
The Todd Family Foundation	Uruguayans United - Uruguayos Unidos Inc	Will & Suzanne Dolan
Toby Allen	Valentino Australia Pty Ltd	Will Critharis
Todd Brownlow	Vanessa Fennell	Willimbury Pty Ltd
Tom & Joanna Pongrass	Vanessa Tay	Wilson Asset Management
Tomago Aluminium Company	Vaucluse Car Club	Xiaxin Yang
Toni Gluseski	Vittoria Food & Beverage	Xuan Shen
Tonya Miller	Vivienne Court Trading Pty Ltd	Yatsal Distributors
Tovo Lighting	Walter Barda Design	Yieldbroker
Transurban   WestConnex	Wayne Mo	Zhaohua Ma
Trustees For Estate Late Leslie Allan Maurer		



## A lasting legacy

# Roll of Honour

*“Immortality is to live your life doing good things and leaving your mark behind.” Brandon Lee*

SCHF is grateful to the many people who have considered the future of sick children in Australia and have made the powerful decision to invest in children’s healthcare for generations to come. We are honoured to recognise the following individuals who passionately believed in the health and wellbeing of children and young people and have left a lasting legacy.

John Napier Aitken	Shirley Anne Galloway	Geoffrey Vernon Shattles
Lynne Alison	Janet Ruth Gormly	Bruce Raymond Smith
Clare Baker	Warren John Hall	Norma Alma Smith
Doris Mercy Bassell	Winsome Steele Halliday	Marjorie Elaine Smith
Eileen May Briggs	Frederick Harris	Mavis Stephens
Faye Leone Buckett	Hazel Fay Hawkeswood	Peter Stephens
Doreen Helen Bullivant	Adolfine Hinterholz	Irene May Stephenson
Geoffrey Robert Burfoot	Margaret Jean Hunter	Raymond George Stoneham
Yvonne Mavis Byrne	Meila Diane Hutchinson	Valmai Catherine Sutton
Halyna Chrapacz	Garfield Manuel	Mollie Elizabeth Traynor
Jennifer Margaret Codling	Lynette Margaret Markham	Wilfred Richard Tuck
Doreen Collison	Olga June Marks	Anthony Bartholomeuw
Arthur Raymond Court	Thello May McCulloch	Nicholas Van De Putte
Johanna Krige Cronje	Beatrice Jean McKay	Pamela Dorothy Walker
William Hilton Daniel	Robert David McKinnon	Hugh William Walker
Clarence Ray Davies	Norman Keith McPherson	Roslyn Margaret Welsh
Janna Dikkers	Kenneth Shorter Mitchell	Ann Whetton
Aleida Ekkel	Margaret Betty Moore	Edwin David Wolfe
Valerie Eileen Franks	Arthur Frank Neill	Shenay Yusuf
Judith Ann Fritz	Aram Ohanian	
Eileen Doris Gabriel	Allan Leslie Richardson	
Isobelle Mary Galbraith	Rosa Marion Rothwell	

# \$1 million milestone



**Sydney Children’s Hospitals Foundation is honoured to have ongoing support from many generous donors who want to change the lives of sick kids and their families. In FY22, many of our passionate and dedicated supporters achieved a significant milestone with their philanthropic support.**

### 400 in 4 Charity Ride

The annual ‘400in4’ Charity Bike Ride is an initiative of Fire and Rescue NSW which raises vital funds for an area close to the hearts of all fire fighters – the Burns Unit at The Children’s Hospital at Westmead, also known as Fire Station #2.

Over four days from Huskisson to Mt Kosciuszko, fire fighters stop along the way to share fire safety tips in local communities. When on the home stretch, and everything is hurting, they draw upon the strength of the many young children receiving treatment. This year we celebrate a fundraising milestone of over \$1,000,000 raised for this specialist unit.

### The Balance Foundation

The Balance Foundation has been generously supporting the Cancer Centre for Children at The Children’s Hospital at Westmead since 2016. Their hope is that through funding the development of CAR-T cell therapies they can help the Children’s Cancer Research Unit (CCRU) achieve better outcomes for children with cancer.

This continued support has been instrumental to the success of this research, which hopes to uncover more breakthroughs and discoveries, spark further innovations and deliver hope to many more families with children diagnosed with cancer.

### Estate of the Late Aram Ohanian

While the Late Mr Ohanian did not have children of his own, he was committed to making a difference to the health and wellbeing of all sick children. He kindly donated his estate to Sydney Children’s Hospital, Randwick and The Children’s Hospital at Westmead. This generous gift to kids’ health will undoubtedly help transform the front line of children’s healthcare, now and into the future.

### Estate of the Late Margaret Betty Moore

The late Ms Moore was determined to impact the health of Australians and demonstrated this when she provided generously to three health charities in her Will. One of these being The Children’s Hospital at Westmead, dedicated to the Hospital’s greatest needs. Her gift will fulfill her legacy by enhancing the quality of care and the experience delivered to the many patients and their families utilising its services every day.

### The Goodridge Foundation

The Goodridge Foundation has been supporting the Cancer Centre for Children at The Children’s Hospital at Westmead’s Clinical Research team since 2019. This critical support has helped unlock new therapies in clinical trials through advanced therapeutics, using gene therapies to harness the body’s immune system to help sick kids fight cancer.

The ongoing support of these initiatives is helping unearth game-changing predisposition testing in newly diagnosed paediatric and adolescent cancer patients using whole-genome sequencing, helping revolutionise care for some of the sickest patients.

### Hearts & Minds Investments Limited

Built on a philanthropic vision, Hearts and Minds (HM1), is committed to providing significant financial support to leading Australian medical research organisations to improve the health and wellbeing of all people.

With a strong belief that Australia is a world leader in quality medical research, and as a nation, responsible for some of the world’s

most life-changing medical discoveries, one of HM1’s nominated institutions to support is the Kids Critical Care Research Unit.

Over two years, HM1 has invested over \$1.42 million into this area with the hope of revolutionising care for all sick kids, no matter what, no matter where.

### Hyundai Help for Kids

Hyundai Help for Kids’ (HH4K) vision is to imagine a world where every sick child gets the care, attention, and treatment they deserve.

Making a significant contribution to kids’ health every time a new Hyundai vehicle is sold in Australia. In just eight years, HH4K has donated an incredible \$1.4 million to SCHF in support of cutting-edge research and patient palliative care at Bear Cottage.

Since HH4K’s first donation in 2014, their support extends beyond the research labs and hospital wards. From gifting vehicles to keep us on the road safely, to money can’t buy experiences, they continue to go all in for kids’ health.



### John Holland

John Holland are committed to not only delivering projects on time and on budget, but also giving back to the community at every step of the way.

In 2017, joint venture partners John Holland and CPB Ghella won the contract to deliver historic rail tunnels. To leave an even greater legacy, the staff and contractors were determined to lead a different type of project – to raise as much as they could for Bear Cottage, NSW’s only children’s hospice.

Over three years, an incredible \$1.15 million was raised in the most innovative of ways. This donation is in addition to many other areas of support, including building a retaining wall to stop recurring flooding, donning capes during Superhero Week and helping build the pathway from Bear Cottage to Shelly Beach.

### The Lewis Foundation

The Lewis Foundation have reached an incredible milestone of \$1.1 million in generous donations since beginning their support 14 years ago.

Since 2008, they have been committed to improving children’s health through supporting Critical Care services, the Kids Cancer Centre and providing 10 years of funding to the Child Protection Unit. This support has enabled expansion of the Group Work program, an essential part of the therapeutic services delivered to some of the most vulnerable families in hospital. Through this investment, the program has supported over 200 children, along with their parents and carers through delivering 342 group work sessions. This long-standing partnership continues to help transform kids’ health.

### The Minton Family Foundation

The Minton Family Foundation are passionate about shaping the future of paediatric healthcare through their support of the redevelopment at The Children’s Hospital at Westmead.

In 2019, Greg Minton underwent treatment for a non-malignant brain tumour, and he was treated by Dr Mark Dexter, a Neurologist at the Westmead Adult Hospital. Greg wanted to give back to the health care system that helped to save his life and decided to invest the future generations, donating generously to SCHF to help sick kids.

The Minton Family Foundation’s inspiring donor recognition leads the way to the Children’s Operating Theatres, a department close to Greg’s heart.

### The Wiggs Family Foundation

Believing in the vision and direction of paediatric care in NSW, The Wiggs Family Foundation have contributed a significant gift to the redevelopment at The Children’s Hospital at Westmead.

Passion and commitment to kids’ health is something embraced by the entire Wiggs family. Peter Wiggs spent three years on SCHF’s Board, dedicating his time and expertise to help raise as much money as possible for sick kids.

Their generosity reflects not only their passion for children’s health and well-being but the belief that all children deserve the very best care, no matter what, no matter where. Their impactful recognition mural can be found at the entrance of the Children’s Short Stay Unit.



## \$5 million milestone



### The Ainsworth Foundation

The Ainsworth Foundation is a long-standing SCHF donor, supporting Sydney Children's Hospital, Randwick's new wing, The Ainsworth Building in 2015. Their impact is also being felt beyond the bricks and mortar, when more recently, they pledged their support of a world-leading neurology research project, led by world-renowned researchers Professor Russell Dale, Associate Professor Michelle Farrar and Professor Adam Guestella.

The project, known as Big Brain, aims to build clinically-embedded research which directly approaches a targeted and therapeutic intervention for every patient living with some of the most debilitating childhood diseases, including autism, mental health, cerebral palsy, epilepsy and rare neurological diseases. It's these types of debilitating conditions that can often place the largest burden on society.

The generous contributions from the Ainsworth Foundation over many years has provided new clinical spaces and research programs that help support some of the sickest children, and provide hope to many families across NSW.

### Coles Group

The Coles Group partnership spans back 22 years, which continues to have a significant impact on kids' health. Over this time, their commitment has been to the oncology departments at Sydney Children's Hospital, Randwick and The Children's Hospital at Westmead. Raising an unwavering \$5.8 million for kids fighting cancer, their support stretches from bench to bedside.

From supporting some of the brightest minds in the field, Coles Group continues to help revolutionise kids' health, making a difference today, but also working to shape tomorrow.

The generosity and continuous support shown by everyone at Coles Group demonstrates that we are better together, being all in for kids' health.



### The Estate of the Late Janet Ruth Gormly

The Late Ms Gormly spent her life in Willoughby, living in her childhood home. Although she never married or had children of her own, family remained important to her. Ms Gormly loved spending time with children, and people who knew her always saw her face light up whenever they were around. Her love for children and wish for them to lead a happy, healthy life is reflected in her final act of gifting her Estate to both children's hospitals, leaving an everlasting legacy and investing in the future of children's health.

### The Estate of the Late Roslyn Margaret Welsh

The Late Ms Welsh was a dedicated and long-term supporter of The Children's Hospital at Westmead, spanning back more than 40 years. Ms Welsh always trusted in the good work being undertaken at the Hospital, wanting her contributions to go where it was most needed. After being such a committed supporter over the years, Ms Welsh's cemented her legacy with a generous final gift. This gift will continue funding vital projects and programs that positively impact the lives of sick children well into the future.

### The Medich Foundation

For more than 10 years, The Medich Foundation has been a long-time, proud supporter of SCHF. The family foundation has contributed significantly across the Sydney Children's Hospitals Network, the impact stretching from bench to bedside.

From funding world-class equipment, research grants and the ZERO Childhood Cancer Program, to the redevelopment of clinical spaces within The Bright Alliance. Most recently, they have contributed two leadership gifts of \$5 million to the Minderoo Children's Comprehensive Cancer Centre, and \$1 million in support of the Children's Cancer Centre and Advanced Therapeutics (CCCAT).

A family of dedicated philanthropists, The Medich Foundation has supported a significant investment in areas of health, community and the arts with over \$12 million dollars of philanthropic support.

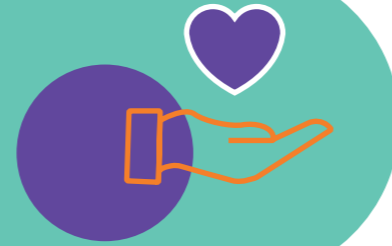
### Sell & Parker

Sell & Parker is a family-owned business that has been generously fundraising for SCHF since 2003. Sell & Parker continues to support Sydney Children's Hospital, Randwick, through their Metal for Miracles campaign.

Their support has been extensive, providing funding for the Intensive Care Unit, and their contributions have enabled the department to continue their Fellowship Program, nursing scholarships, refurbishments of the ward, the purchase of life-saving equipment and the refurbishment of Sunny's Cafe courtyard.

Sell & Parker's commitment to kids' health helps ensure that the children and families who visit Sydney Children's Hospital, Randwick continue to receive the best in clinical support each time.

## \$10 million milestone



### Kids with Cancer Foundation

For 25 years, the Kids with Cancer Foundation has been one of SCHF's most generous and dedicated supporters. Under the guidance of their founder and Chair, Mr Peter Bodman, the Kids with Cancer Foundation have provided funding in excess of \$17 million to support children with cancer receiving care across Sydney Children's Hospitals Network.

This support extends across many areas including world-class research projects and social work positions at Bear Cottage. Most recently, they have committed to fund a world-first clinical trial led by Professor David Zeigler, which seeks to create a new treatment to fight aggressive ependymoma brain tumors in children.

### The Estate of the Late Christina Armour

The late Christina Armour was a vibrant lady who enjoyed life and all aspects of nature. Her garden was described as a haven for local birdlife and a burst of brightness for all to see. Mrs Armour generously gifted part of her estate to Sydney Children's Hospital, Randwick and The Children's Hospital at Westmead. Her gift will continue to bring a burst of brightness to the lives of sick kids by supporting current services, research and various projects and programs for many years to come.

### Big W

As one of SCHF's longest standing and largest donors, BIG W has been raising funds for SCHF since 1994, with a lifetime giving total of \$8.4 million.

Their fundraising activities and initiatives take place across stores state-wide, with three token campaigns in FY22, rallying the public behind kids' health. This support is complemented by their workplace giving and community fundraising.



## \$25 million milestone

### Sargents Pies Charitable Foundation

Over the last 25 years, Sargents Pies Charitable Foundation has contributed over \$32 million in funding to SCHF - more than any other organisation or individual on record.

In recent years they have provided \$2.5 million for a MRI scanner, \$2.7 million for an Interventional Radiology Suite, and \$1.5 million for the a new state-of-the-art Gamma Camera at The Children's Hospital Westmead, a first for paediatric hospitals in Australia.

Most recently Sargents generously gave \$2 million towards the recognition of the Medical Imaging Suite in Block K of The Children's Hospital at Westmead.

This transformational support continues to help revolutionise kids' health, now and into the future.



## Financial Summary

**In FY22, SCHF generated a record-breaking \$76.6 million, which includes \$1.5 million from the Minderoo Foundation for the new Minderoo Comprehensive Cancer Centre which was given directly to SCHN due to the nature of the gift. We donated \$40.2 million towards the front line of children's healthcare, including \$39 million for specialised services and research across Sydney Children's Hospitals Network.**

Whether it's contributing towards our three key funding areas, making a difference today, or working to shape tomorrow, every donation is revolutionising paediatric healthcare.

While the beginning of FY22 continued to feel the impacts of the COVID-19 outbreak with ongoing lockdowns and restrictions, we saw a return to normalcy in the latter half of the year. This meant that many of our fundraising activities and events, including Convoy for Kids, Rally for Recovery and the record-breaking 2022 Gold Dinner, resumed in a way that more closely aligned with how they were delivered prior to the pandemic.

Despite the unstable social and economic environment brought on by the pandemic, our Movement of Many – including our staff, supporters and donors – continued to come together like never before and advocate for the patients and families that SCHF serves.

With that unwavering support and generosity, along with the return of some of our key initiatives, we are proud to report that in FY22 we generated a record-breaking \$76.6 million in total revenue – a figure we're extremely proud to report on. SCHF also received an incredible \$4.9 million in gift-in-kind, products and services provided to support patients, families and SCHN staff or reduce costs across both SCHF and SCHN.

There's no doubt that that last few years have seen many forks in the road. But, with strong leadership and governance, as well as the tenacity demonstrated by our donors, SCHF achieved transformational results.

These results give families hope that a breakthrough is one step closer, it gives healthcare professionals hope for new treatment options and equipment, and it gives sick kids hope that one day soon they can hopefully get back to the lives they love.

### Grant Contribution

During the 12-month period ending 30 June 2022, SCHF contributed \$40.2 million towards improving child health, this compares to contributions of \$39.8 million for the previous 12-month period. We invested these vital funds in line with SCHF's 2017–2022 Strategic Direction, guided by priority needs in three core areas: research, clinical care and patient experience.

Of the \$40.2 million contributed, \$37.6 million was in support of SCHN, which includes Sydney Children's Hospital, Randwick; The Children's Hospital at Westmead; Bear Cottage; NETS; and Kids Research. The remaining \$2.6 million was donated to key child health partners to help provide all children with access to the best possible healthcare, whenever and wherever they need it.

### Sydney Children's Hospitals Network

As part of the \$37.6 million donated to the Network, we funded 94 clinical, nursing, allied health, education or support positions at a cost of \$7.0 million, along with 18 Fellowships at a cost of \$2.1 million. These Fellows will go on to become the specialists of the future, training hundreds of new doctors and treating thousands of children in Australia and overseas. We provided \$4.8 million towards equipment and technology, including \$1.2m towards a state-of-the-art Gamma Camera, which helps to increase comfort and reduce the time and radiation exposure for children during scans critical to monitoring the progress of their treatment; and \$1 million for beside patient entertainment technology.

We also contributed \$8.8 million to 78 research positions, including 28 that were clinically based. SCHF also contributed \$10.4 million towards the major redevelopment projects at The Children's Hospital at Westmead and Sydney Children's Hospital, Randwick. The remaining \$4.5 million contributed to the Network went to other areas of research, clinical care and patient experience, including consumables for 21 programs/projects.

### Key child health partners

As part of the \$2.6 million donated to child health partners we donated \$1.5 million to support research projects with key partners such as the Children's Cancer Institute Australia and University of New South Wales. This included \$0.5 million for ZERO to fund studies to discover novel treatments for children with aggressive forms of cancer and more than \$0.4m for innovative Greenlight projects. The remaining \$1.1 million was distributed to Curing Homesickness Alliance partners from funds raised from this initiative in their state or territory to support clinical research, positions or equipment to help get kids home from hospital sooner.

### Income

Gross income for the 12 months to 30 June 2022 (FY22) was \$73.3M compared to \$55.8M for the 12 months to 30 June 2021 (FY21). There was a significant increase in fundraising revenue, that being \$74.7M for FY22, \$28.6M higher than FY21. This does not include indirect revenue raised of circa \$1.9M whereby SCHF is responsible for raising funds that are paid directly to some of our beneficiaries.

This would take the combined fundraising generating activity to \$76.6M, a remarkable performance for the year. Unfortunately, due to the turbulent last 6 months of the FY22 period in the investment markets, investment income was down by \$10.5M compared to FY21.

### Investment update

Investment income over the period delivered some disappointing returns for the FY22 period. The total value of the investment portfolio was \$53.7M as of 30 June 2022 (\$57.4M as at 30 June 2021). The underlying purpose of the SCHF's investment portfolios are to maximise medium-term and long-term returns within reasonable and prudent levels of risk while growing the underlying capital of SCHF to offset the effects of inflation over the long term. We continue to maintain an appropriate asset allocation based on a total return policy.

### Expenditure

Total fundraising and operating expenditure for the reporting period was higher, being \$19.8M compared to \$15.5M for the FY21 period. Retail (Café & Gift shop) was in line with the previous year, and Operational Expenditure was down \$0.6M, or 12%, over the previous period with the continuation of COVID-19 focusing on a reduction in overheads where appropriate. This was offset by an increase in fundraising expenditure of \$4.8M that was largely due to the expenses relating to holding several events that were cancelled in the previous period and the removal of the headcount freeze in a latter half of FY22, initially implemented in 2020

due to the pandemic. The ratio of fundraising expense to fundraising income was 19.2%, compared to 21% for the 12 months to 30 June 2021, with the decrease largely attributable to a significant increase in fundraising revenue, accompanying the increase in expenditure. This calculation includes only costs and income directly associated with fundraising activity and excludes governance, administration and retail activity.

### Balance Sheet

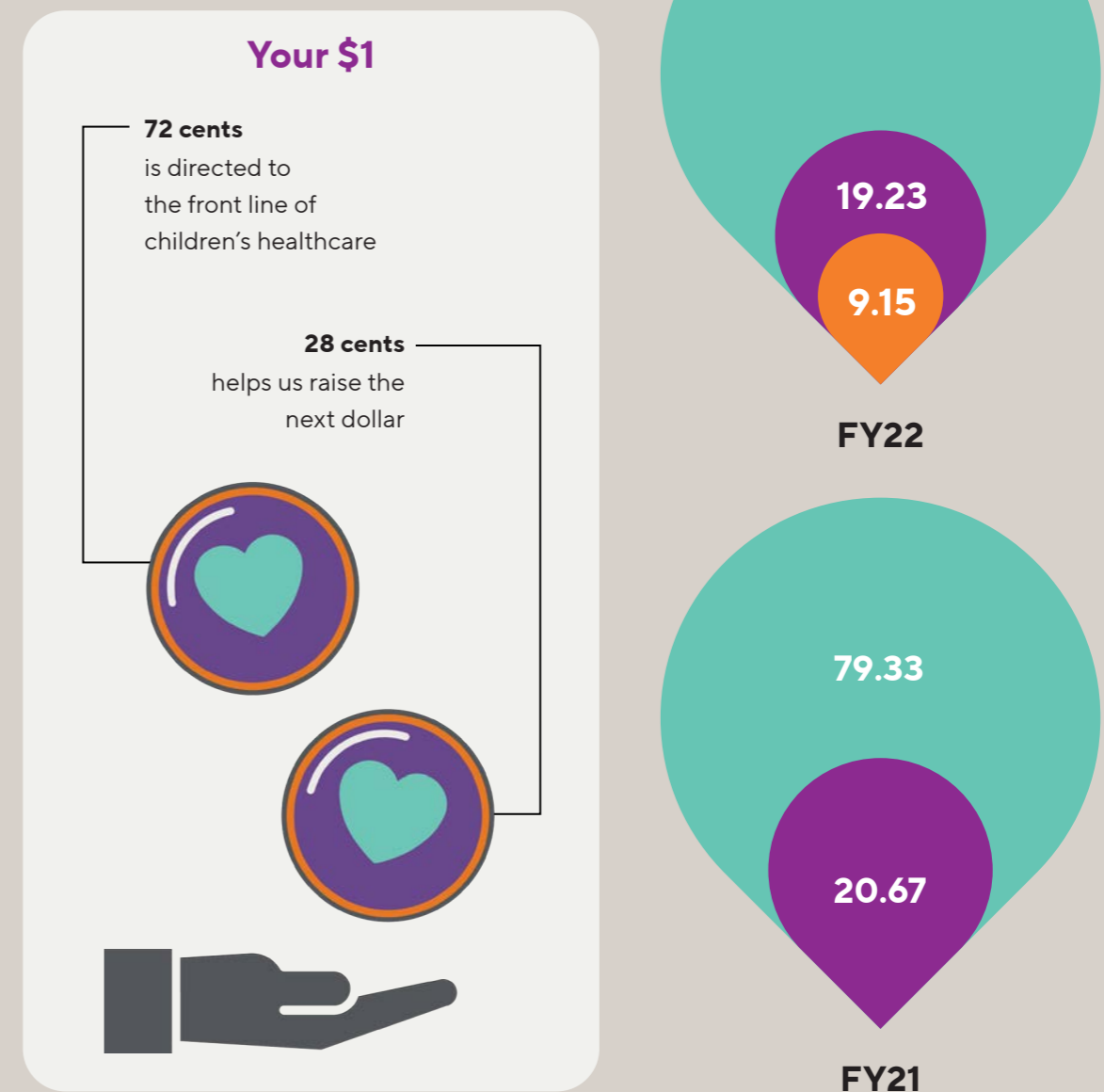
Overall, SCHF is in an extremely strong and sustainable financial position with total net assets of \$92.8M up by \$13.4M. This includes the specified/restricted and unspecified/unrestricted reserves of \$62.7M and \$29.2M respectively. The balance of reserves is the asset revaluation reserve of \$0.9M.

SCHF has a policy of holding unspecified reserves to allow the Foundation to sustain program grant levels regardless of market conditions, have sufficient working capital available to run the organisation, invest in new systems and respond to major strategic opportunities as they arise. All proposed grants were submitted and approved through the relevant sub-committees and Board according to policy.

Specified/restricted reserves at 30 June 2022 of \$62.7M are tagged for use as directed by donors and aim to be acquitted within a reasonable timeframe for the specified purposes.

### Chart 1: Helping sick kids

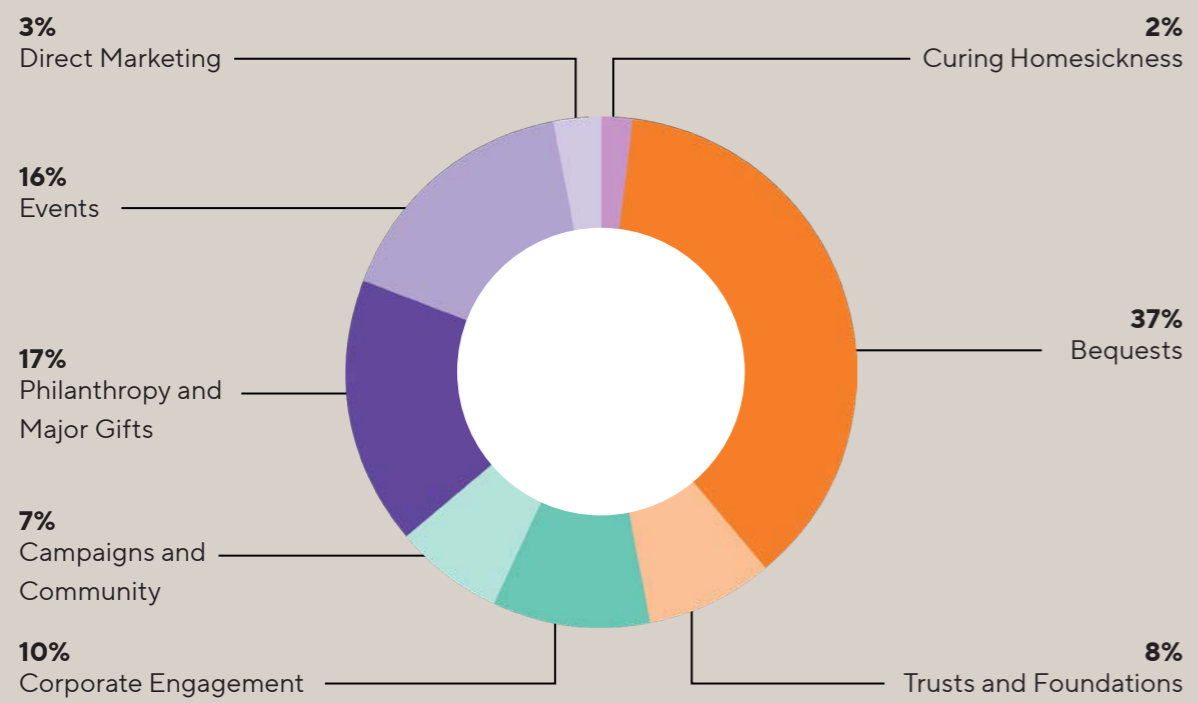
Cents in the dollar raised to help sick kids and their families



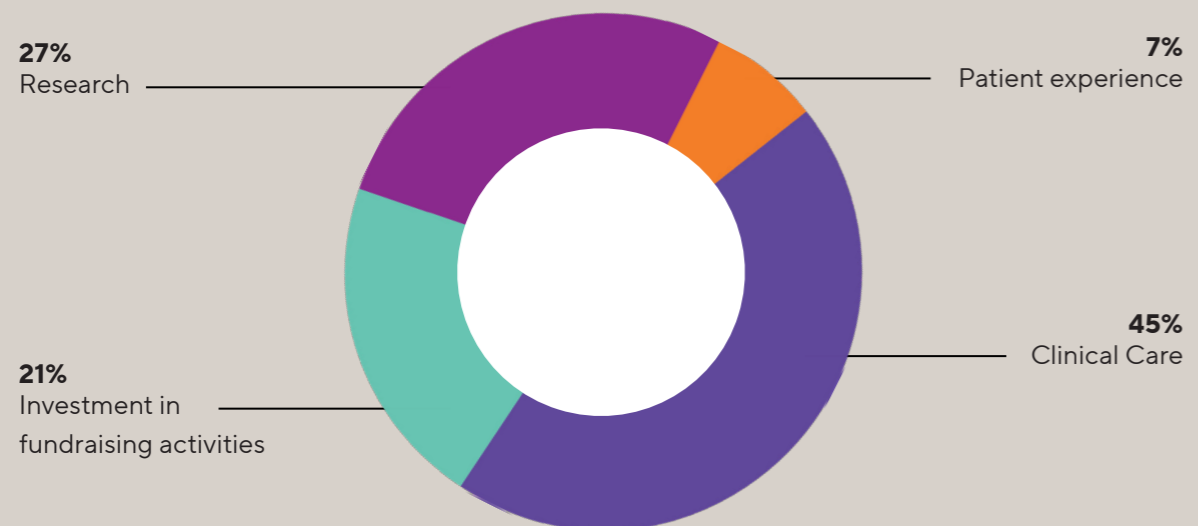
- Funding for research, clinical care and patient experience
- Investment in fundraising
- Governance and administration residual costs

\* In FY21, governance and administration residual costs were covered by investment and other income, and the remaining balance was allocated to funding for research, clinical care and patient experience.

**Chart 2: How you donated**



**Chart 3: What your donations achieved**





# Regulatory Framework

**The charitable purpose of Sydney Children’s Hospitals Foundation is to promote the prevention or management of childhood disease and injury, with a focus on kids and families receiving treatment in services provided by the Sydney Children’s Hospitals Network.**

To deliver on this purpose, SCHF operates within the following legal and regulatory framework. We are committed to the highest standards of personal and corporate integrity. Good governance leads to better outcomes, and as SCHF continues to grow in size and complexity, we will maintain a robust corporate governance and risk management approach.

This means looking after our employees, wellbeing, building a culture of values-driven behaviour, and demonstrating high levels of accountability and transparency in all our relationships and financial transactions. We are an independent health promotion charity, registered with the Australian Taxation Office as an Item 1 Deductible Gift Recipient.

## Sydney Children’s Hospitals Foundation Board

Constitution

Duncan Makeig (Chair)

### Audit & Risk Committee (ARC)

- Sub-committee**
- Mr Simon Hickey (Chair)
  - Mr Duncan Makeig
  - Mr Tom Butcher
  - Mr Danny Rezek

### Nominations & Remuneration Committee (NOMS) - changed to People & Culture in Q3FY22

- Sub-committee**
- Mr James Brindley (Chair)
  - Mr Duncan Makeig

### Fundraising Innovation & Development Committee (FIDC)

- Sub-committee**
- Dr David Court (Chair)
  - Mr Duncan Makeig
  - Mr Wayne Mo
  - Mr Darren Fittler\*
  - Ms Tara Foord (Observer)

### Commercial Investments Committee (CIC)

- Sub-committee**
- Mr Tom Butcher (Chair)
  - Dr Matt O’Meara
  - Ms Nicola Stokes
  - Mr Gareth Cope\*
  - Ms Libby Davidson\*
  - Dr David Court (ex officio member)

\*External members

We are a company limited by guarantee, registered with the Australian Securities and Investments Commission. We are registered with the Australian Charities and Not-for-profits Commission and are an approved holder of the Registered Charity Tick. Our governance documents can be viewed at [www.schf.org.au/governance](http://www.schf.org.au/governance).

### Our Board

Sydney Children’s Hospitals Foundation has an independent voluntary Board, which ensures SCHF is operating legally, ethically and responsibly. The purpose and activities of SCHF are defined in our Constitution, which guides the Board’s decisions and underpins our strategic direction. The profile of each of our Directors, including their tenure, is available at [www.schf.org.au/our-people](http://www.schf.org.au/our-people) and included in our financial statements.

### Investment policy

Through prudent management, SCHF has accumulated funds that are invested strategically to protect our long-term security and provide continuity in delivering positive outcomes for children’s health. The Board has ultimate fiduciary responsibility for managing these funds and has delegated authority to the Audit and Risk Committee (ARC) to ensure the funds are invested in line with SCHF’s purpose. JBWere manages the funds in accordance with an Investment Policy Statement.

### Socially responsible investment

SCHF has a responsibility to ensure that our investment practices align with the expectations of our beneficiaries, our stakeholders and the broader community. To align the investment mandate with these material issues, the Board has determined that SCHF will not make any direct investments in securities (companies) that derive sales revenues from:

- Tobacco production and distribution
- The use of child labour (as defined under relevant United Nations conventions).

If the Board concludes that an organisation is not behaving in a socially responsible manner, it reserves the right to instruct JBWere to specifically exclude this organisation and all associated holdings from SCHF’s investment portfolio.

In making these decisions, the Board and the ARC will consider the broader environmental, social and governance record of the company in question. They accept that excluding industries and specific stocks has the potential to limit the risk-adjusted return generated.

## Contact us

### Connect



Visit [www.schf.org.au](http://www.schf.org.au) for more information about how you can get involved.

Connect with us on social media @schf.kids to be inspired every day by stories and news.

### Our contact details

#### Phone

1800 770 122

#### Email

[info@schf.org.au](mailto:info@schf.org.au)

#### Mailing address

Darug Country  
Locked Bag 9002  
Westmead NSW 2145  
Australia

#### Registered office

Gadigal Country  
Level 12, 680 George Street  
Sydney NSW 2000  
Australia

### Registered charity



Sydney Children's Hospitals Foundation is an independent Health Promotion Charity and registered as an Item 1 Deductible Gift Recipient by the Australian Tax Office.

ABN 72 003 073 185

### Donate



With your help we can go all in to change children's health for all kids, always. Please use this QR code if you would like to make an online donation today.



# All in for kids' health

