



FY23

Annual Report



Sydney
Children's
Hospitals
Foundation



"In Unity We Heal." artwork by David Williams of Gilimbaa.

All in for kids' health

We are the Movement of Many, different people from all walks of life. With one foot at the front line and one in the future, we're here for those who deserve our all. To help all sick kids, no matter where, no matter what.

Acknowledgment of First Australians

Sydney Children's Hospitals Foundation acknowledges First Australians and recognises their continuous connection to country, community and culture. We are committed to helping close the gap to achieve equality in health and life expectancy for Aboriginal and Torres Strait Islander peoples.

Cover image

Sixteen-year-old Molly, a former patient of The Children's Hospital at Westmead, features in a spectacular mural located at Accor Stadium. The artwork, affectionately known as Molly's Rainbow, celebrates Accor Stadium's 21 years of advocacy for The Children's Hospital at Westmead and Sydney Children's Hospitals Foundation, and Molly's incredible strength as a two-time Osteosarcoma bone cancer survivor.

The mural was brought to life by street artist Reuben Boughtwood, also known as Reubzz.

Read Molly's story here



Contents



4

SCHF in review

8

From our leaders

10

Strategic Framework and measuring our progress



12

Impact

22

Reputation

27

Effectiveness



28

Culture

30

Our People

32

Marie is all in for kids' health



38

Roll of Honour

40

Our donors

58

Financial summary

\$4.1M

Gift-in-kind

110,000

Coffees sold at Sunny's Cafe

30,109

Individual donors

2,215

Corporate donors

2,384

In tribute donations

4,707

Workplace giving donations

112

Grants received

1,686

Kids Army Regular Giving donors

8,737

Volunteer hours donated

136

Gifts in Will

3,044

Volunteers

1,878

Community Fundraisers

SCHF in Review

FY23 Snapshot

The Movement of Many



Thank you for fighting for the health and wellbeing of all children in an ever-changing world.

With your support, we raised

\$88.3M*

for all sick kids, no matter where, no matter what.

*this includes \$64.8 million in revenue received and a further \$23.5 million in pledges



Thanks to your ongoing support, we contributed \$51,572,814 towards research, clinical care and patient experiences, for the prevention or management of childhood illness or injury, with a focus on kids and families receiving treatment or care from services provided by Sydney Children's Hospitals Network (SCHN). To deliver further impact for SCHN's staff and patients, in partnership with our Movement of Many, we were able to provide an additional \$4,059,747 in gift-in-kind support.

SCHF in Review

FY23 Impact Snapshot

The Movement of Many

\$16,833,846

Research

\$6,152,280*

Patient Experience

*including Curing Homesickness Ltd

\$28,586,688

Clinical Care

From our leaders

A Message from our Chair

“My first year as Chair of the SCHF Board has been nothing short of inspirational, demonstrating the power of unifying for a common cause.”



One of the largest and most trusted children's charities in the country and one of the largest children's hospital foundations in the world, SCHF exists to provide all children access to the best possible healthcare, whenever and wherever they need it.

We are proud to be the exclusive philanthropic partner of the Sydney Children's Hospitals Network (SCHN), the largest kids' health network in Australia, encompassing two major children's hospitals, specialised care services and cutting-edge paediatric research.

Despite uncertain economic conditions and cost-of-living pressures, we have seen our community rally around our cause and continue to go all in for kids' health. I am deeply inspired by the commitment demonstrated by each of you, and I know SCHF would not be where it is today without that strength and unreserved dedication to the lives of sick kids.

Thanks to the generous outpouring of support from our Movement of Many in FY23, we have raised an extraordinary, and record-breaking, \$88.3 million. This was complemented by \$7.2 million of other operational and investment revenues.

An incredible \$50 million has been donated towards critical children's health initiatives provided by the committed teams across the Sydney Children's Hospitals Network (SCHN).

We were also able to provide an additional \$4.1 million in gift-in-kind support and fund other immediate and future research, clinical excellence and patient experience initiatives – all of which ensure the best care for sick kids today and better health for all children tomorrow.

Not only does this remarkable amount demonstrate the dedication of our team, donors, supporters and volunteers; it gives families hope that a breakthrough is one step closer, it gives healthcare professionals hope for new treatment options and equipment, and it gives sick kids hope that one day soon they can get back to the lives they love.

I'd like to acknowledge the invaluable contribution of those who came before me, particularly Nicola Stokes and Duncan Makeig, who built the foundations that enabled this amazing result and pushed SCHF to new heights during their time with us.

And, of course, none of this would be possible without the unwavering dedication of my fellow Board Directors, Kristina Keneally as CEO, the Executive Leadership Team and our staff. Their steadfast commitment to supporting our donors and positively change children's health is testament to what we can do when we join together.

I look forward to seeing what we can do, together, in the next year and the years ahead.


Len Chersky
Len Chersky

Chair
Sydney Children's Hospitals Foundation

From our leaders

A Message from our CEO

“I am thrilled to be joining SCHF at such a pivotal moment in our story as we prepare to take things to the next level in pursuit of our mission to go all in for kids' health.”



It's been an honour and a privilege to be welcomed into the Movement of Many, our collective of over 70,000 unstoppable change-makers made up of donors, volunteers, partners, supporters and SCHF team members past and present. Together, we truly are a force to be reckoned with.

Thanks to our dedicated community, we raised an outstanding \$88.3 million towards the frontline and future of kids' health in the last financial year alone. We have also seen remarkable results across all our fundraising activities, including our world-record-breaking \$19.2 million success at our flagship Gold Dinner and \$15.8 million for our Sydney Sick Kids Appeal.

This unprecedented growth would not have been possible without those who gave their all to get us here. I know I speak on behalf of everyone at the Foundation in acknowledging the outstanding contribution of outgoing CEO Nicola Stokes and Chair Duncan Makeig, along with a number of longstanding board members.

Under their leadership, SCHF experienced tremendous growth - more than doubling our revenue and building the structures and systems needed to propel us into the next phase of our journey. Nicola and the previous Board leave a remarkable and lasting legacy.

I also thank the current SCHF team, both those that have been with us a long time and those, like me, that are new on the scene. Our team is ambitious and adventurous, warm, caring and authentic. It is no surprise SCHF was named

the 2022 Fundraising Team of the Year by Fundraising Institute Australia. With this as our bedrock, we can truly reach for the skies in our mission to achieve the biggest possible impact on children's health.

Finally, I highlight our relationship with the Sydney Children's Hospitals Network. One of the things that excited me most about joining SCHF at this time was the chance to support the caring clinicians and cutting-edge researchers at the Network. Together, the Network and SCHF can leverage our combined strength and leadership to broker new partnerships and opportunities for the Network itself and for the kids and families we serve.

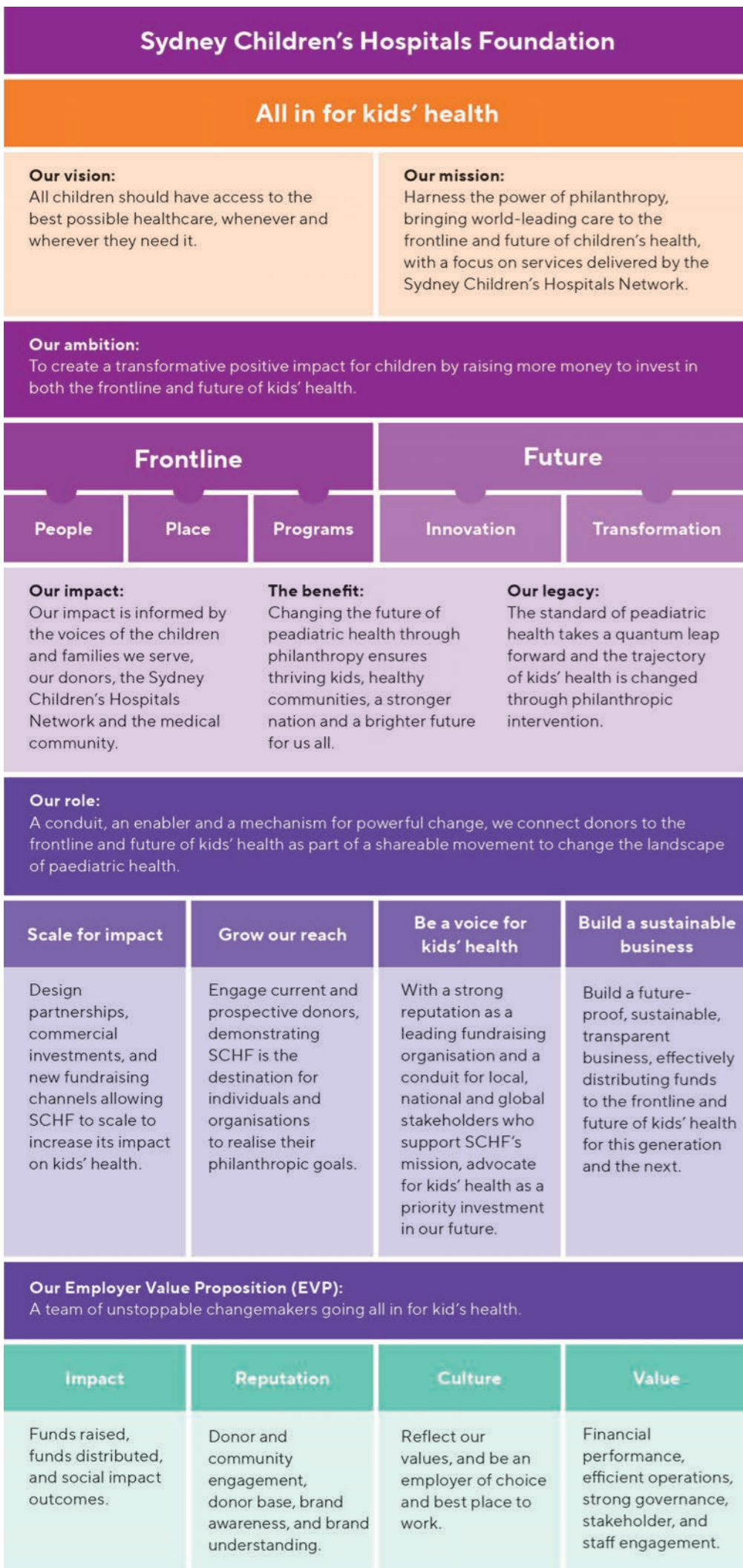
Through close family connections and my own personal experiences with the Foundation, I know first-hand the difference that clinical excellence, cutting-edge research and heartfelt care and support can make at the most difficult of times.

SCHF has come so far and there is so much more that we can achieve. We are a team bursting with ideas, energy and ambition, ready and raring to embark on a brave new chapter of our story.

Thank you for joining us.


Kristina Keneally
Kristina Keneally

Chief Executive Officer
Sydney Children's Hospitals Foundation



Why

What

How

Measurement

Strategic Framework and measuring our progress

This diagram (left) has been created to provide an overview of the action and commitment that underpins our new strategic plan. Our Balanced Scorecard (below) includes external and internal measures - key indicators connected to how well we are achieving the goals set out in our Strategic Framework.

External Measures

1 Impact The fundraising revenue we generate reflects how well we have engaged our donors in our cause and the strength of our stakeholder relationships.	FY19-FY22 benchmark	FY23-FY25 target	FY23 result
	\$170m fundraising revenue	\$190m	\$88.3m
2 Reputation This measures levels of trust among our donors and the community and reflects how well we deliver on our promises.	FY19-FY22 benchmark	FY23-FY25 target	FY23 result
	90/100	92/100	90.4/100

Internal Measures

3 Effectiveness This reflects how effectively we are running our organisation and how well we understand the drivers of cost and revenue.	FY22 benchmark	FY23-FY25 target	FY23 result
	22% Cost of fundraising	Revenue & expenses on budget	Revenue & expenses on budget
4 Culture This reflects how true we are to our values and how well we are performing as an employer of choice.	FY22 benchmark	FY23-FY25 target	FY23 result
	78% Employee engagement	82%	80%



Review of strategic goals

Strategy 1: Impact

Transforming the lives of sick and injured children through clinical excellence, patient experience and cutting-edge research is why we exist. As we strive to create the biggest possible impact, we simply could not achieve these life-changing results without the vital support of our Movement of Many.

The Movement of Many is the name of our community of donors, supporters, friends and partners. There are 70,000 members in the movement, a number growing every day. They are the thinkers, doers, planners and creators, the helping hands and the guiding lights that make the Foundation what it is.

Support of any kind helps bring us closer than ever before to making our mission – to go all in for kids’ health – a reality. Whether you’ve hosted a fundraising event, left a legacy as a gift in Will, donated your time by volunteering, got involved through one of our major appeals, supported us through workplace giving, or kindly provided gift-in-kind, you’re helping fight for the health and wellbeing of all children in an ever-changing world.

Allens generational impact

Over the last 28 years, Allens have touched the lives of thousands of children with \$2.3million in lifetime giving that has gone towards vital clinical positions and support for crucial programs at the Sydney Children’s Hospital at Randwick. Until 2021, Allens supported the Sydney Children’s Hospital’s Neurology Fellow program. Since then, Allens have directed their fundraising to focus on the Saunders Unit at Sydney Children’s Hospital, Randwick, aligning with their renewed emphasis on Mental Health, specifically supporting the important services the Saunders Unit offers for Children and Teenagers mental health. Allens have also supported SCHF in other ways including through workplace giving and being involved in SCHF’s major events and appeals.

The power of partnership

Since 1995, Arab Bank Australia has been a partner of Sydney Children’s Hospital, Randwick, raising \$260,000 for the Kids Cancer Centre as well as Fellow positions. In May, to extend their giving, Arab Bank Australia joined forces with The Grounds and co-hosted The Brunch 2023 that raised an impressive \$200,000 for the CICU Overnight Parents Lounge that will form part of the redeveloped Sydney Children’s Hospital, Randwick. The lounge will give parents and families a dedicated space to reset and recoup while children are undergoing treatment in the ICU.

Celebrating Cornucopia Committee’s 60th Anniversary

As the Cornucopia Committee celebrate their 60th anniversary we’d like to acknowledge the monumental impact their fundraising efforts have had on the Child Protection Units at The Children’s Hospital at Westmead and Sydney Children’s Hospital, Randwick since 1963. Through an array of annual events including a race day, fashion day and Christmas lunch, the Committee have raised over \$1.7m to support the development of frontline services, contribute to research and fund vital medical equipment across both Child Protection Units. This incredible fundraising effort spanning decades is a testament to the transformative impact our generous donors can have on the future of kids’ health.



Bringing colour to the ICU

Thanks to funding from Create NSW, the SCHF Art Program has transformed the paediatric Intensive Care Unit (ICU) at Sydney Children's Hospital, Randwick. Within the ICU, infection control measures prevent the installation of traditional art forms, limiting the opportunity for artistic engagement by children, families and staff. This novel project is an Australian-first, commissioning a site-specific artwork created collaboratively between leading NSW artists, healthcare professionals, and patient families that was then printed on disposable curtains throughout ICU.

Reuniting sick kids with their pets

In April, SCHF partnered with Petbarn Foundation to help deliver specialised pet gardens as part of the redevelopments for Sydney Children's Hospital, Randwick, and The Children's Hospital at Westmead. The pet gardens will be a first of their kind for the hospitals. We know that for a lot of children, being away from their family pet is one of the hardest parts of their healthcare journey. Thanks to a generous \$500,000 commitment from Petbarn Foundation, we can make that journey a little easier by supporting dedicated spaces for children undergoing treatment to see their pets, large or small, inside the hospital grounds. In FY23, Petbarn Foundation also donated an additional \$250,000 towards our Sydney Sick Kids Appeal and 2023 Gold Dinner.

Lenity Australia enables life-changing research

Lenity Australia joined our Movement of Many in 2017, driven by a heartfelt connection to SCHF and SCHN through Chairman Geoff Henry, whose granddaughter received treatment at the Kids Cancer Centre. In the ensuing six years, they have contributed a remarkable \$1.7 million to bolster the Zero Childhood Cancer Program, and in their latest act of generosity, have committed \$735,000 in funding for Kids Research to propel two groundbreaking initiatives: GENEie and STOP2, both of which are set to change the lives of thousands of children, not just here in Australia but across the world.

\$6,152,280

raised to fund excellent patient experience





Sector leading volunteer program

Over the last 12 months, SCHF has doubled our volunteer base from 1,258 to 3,044 active volunteers and was accredited by The Centre of Volunteering as an Exemplary Volunteer Involving Organisation in NSW for our adoption of the National Standards for Volunteer Involvement. SCHF is the first and only organisation to fully implement these standards and receive this accreditation in NSW.

Kylie Elliott, Volunteer and Supporter Engagement Lead, is representing SCHF on a national and international level to knowledge share, increase capability and elevate the Australian non-profit sector through one-on-one mentoring and shadowing opportunities. Kylie has also led virtual seminars alongside big thinking volunteers from across Australia and the United Kingdom.

In FY23, SCHF was the recipient of two Volunteer Management Activity grants from the Australian Government totaling \$93,000. These grants will allow SCHF to lead monthly webinars that guide volunteer involving organisations on implementing the national standards and support the creation of an online tool for volunteer managers and organisations to achieve great impact on a small budget.

Connecting with philanthropy's next generation

In April, our Movement of Many jumped online to be part of Sydney Children's Hospitals Foundation's annual Stream Team. Utilising Tiltify, the world's leading fundraising platform for streaming, 11 streamers challenged themselves and their audiences to raise much-needed funds for sick kids. Among them was former host of Good Game and ex-ABC 3 presenter, BAJO, who raised more than \$11,100 during his 4hr stream. The price of his fundraising? Giving up banana bread and hot chips for 6 months. Loserfruit, the second most followed channel on Twitch among female gamers in the world with 2.9 million followers, joined the fun and raised over \$8,000 during her 12hr and 40min charity stream.

Supporting a home away from home

After accepting her first invitation to A Bear Affair in 2016, Kay Van Norton's passion to support her community was reignited. This year, thanks to her generosity, Sydney Children's Hospitals Foundation was able to direct \$200,000 towards the paediatric palliative care programs at Bear Cottage – the only children's hospice in NSW. When families come to Bear Cottage, the dedicated staff and volunteers help create uniquely precious and memorable moments during some of the most difficult times of their lives in a warm, homelike environment. This incredible gift brings Kay Van Norton's lifetime giving to \$800,000 in support of Bear Cottage and its vital work.



Walk for Kids with Cancer breaks records!

On Sunday 26 March 2023, Walk for Kids with Cancer, our annual scenic journey from The Rocks to Balmoral (13km) or Manly (27km), saw 1,059 supporters and 94 teams come together to go all in for kids' health – the largest crowd in the event's 16-year history!

Together, our unstoppable changemakers raised a record-breaking \$511,013 in support of sick kids. This incredible result would not have been possible without the phenomenal support of our Movement of Many, who laced up their walking shoes and called on their friends and family to donate. For the first time, funds raised from the event support both oncology departments across Sydney Children's Hospitals Network (SCHN) – the Kids Cancer Centre at Sydney Children's Hospital, Randwick, and the Cancer Centre for Children at The Children's Hospital at Westmead.



City2Surf makes a triumphant return

After two long years of cancellations and lockdowns, it was so exciting to see our Movement of Many come together for Team SCHF at City2Surf 2022! With over 2,100 people joining us to raise an unprecedented \$545,000 for sick kids being treated across the Sydney Children's Hospitals Network. Despite the diverse motivations behind each participant lacing up their running shoes to conquer the 14-kilometer stretch from Sydney CBD to Bondi Beach in support of SCHF, they all share a collective aspiration to transform the landscape of children's healthcare. The outstanding result of City2Surf this year showcases the incredible impact our Movement of Many can have when we come together to go all in for kids' health.



Reshaping the future of paediatric healthcare in Australia

On Thursday 4 May, the amazing generosity of Australians was on display when Sydney Children’s Hospitals Foundation broke the global record for children’s hospital charity galas, raising an outstanding \$19.2 million for children with complex and intensive needs at our flagship Gold Dinner event.

Gold Dinner saw over 400 of the nation’s leading philanthropists and VIPs gather and raise critical funds for The Children’s Hospital at Westmead’s new Kids Complex Care Centre, to be known as the Kookaburra Centre. The Kookaburra Centre is a key facility in the Stage 2 redevelopment of The Children’s Hospital at Westmead.

Children with complex, rare medical conditions need life-long comprehensive care and intensive support to get through daily life. It is these children and their families that Sydney Children’s Hospitals Network’s proposed new complex care centre would cater for, combining a multidisciplinary model of care with state-of-the-art infrastructure to provide a genuinely innovative healthcare experience.

The historical funds raised also included the largest single pledge in 27 years of Gold Dinner history – a \$5 million donation made by Gina Rinehart’s family on behalf of Hancock Prospecting.

This year’s Gold Dinner was presented by Scape – Australia’s largest owner and operator of purpose-built student accommodation – who served as Principal Partner. This philanthropic partnership spans more than just one event, including support for community fundraising events and key appeals, and aims to encourage the next generation of volunteers and philanthropic leaders to get involved and make an impact that lasts a lifetime.

The Gold Dinner committee, expertly led by co-Chairs Linda and Joshua Penn for the second year in a row, included long-standing members James Auswild, Alina Barlow, Sophie Curtis, Alessandra Eddy, Benita Kam, Tara Rushton and Monika Tu and new members Craig Carracher, Katie Evans, Adrian Fonseca, Bernadette Nassif and Kristy Nassif Elias. As co-Chairs of Gold Dinner, Linda and Josh have helped SCHF expand our reach and achieve even greater outcomes for sick kids and their families. They truly have elevated philanthropy in Australia and beyond.

Watch the magic



In addition to Gold Dinner, our donors are making an impact on the future of children’s healthcare by supporting the redevelopment of Sydney Children’s Hospital, Randwick, and The Children’s Hospital at Westmead. Sydney Children’s Hospitals Foundation would like to thank the following groups and individuals for their support*:

ACE Competitions	David and Linda Penn	Julie-Anne McMillan
ACCO Brands Australia Pty Ltd	Katie Evans	Karinvir Singh Gill
The Ainsworth Foundation	The Medich Foundation	Phillip Cochineas
ALSPEC	Melissa Lewis Foundation	Robert Whyte
Arab Bank Australia Limited	Minderoo Foundation	Petbarn Foundation
Bennelong Australian Equity Partners (BAEP)	The Minton Family Foundation	Sargents Pies Charitable Foundation
Baiada Poultry – Head Office	Nassib El Thoumi	Scape Australia Management
Bulgari	Neilsen Foundation	Shaw and Partners Financial Services
Coogee Bay Hotel	Oxanda Education	Stephen and Emma Gaitanos
Deicorp Pty Ltd	Turnbull Foundation	Supagas
The Dee Dee Foundation	Urban Apartments Pty Ltd	WEM Civil
Estate Late Irene Hazel Prokop	Bryce Sceresini	The Wiggs Family Foundation
Hancock Prospecting Pty Ltd	Christina Quinn	Hai Lan and Yolanda Wang
James Fairfax Foundation	Craig and Susie Laundry	Yvonne Lefort
JDH Capital	Dominic and Kate Roche	
	D Sze Summer	

*includes Gold Dinner donors who have contributed \$50,000 or more

Impact

Curing Homesickness



Over \$3M raised nationally in FY23



\$871,000 raised for SCHF



1.3M jars of Mum's Sause sold



71 projects funded

Curing Homesickness Ltd (CHL) is a wholly owned subsidiary of SCHF that brings together a national alliance of hospitals, foundations and paediatric services to help sick kids on their journey home, back to the things they miss. Curing Homesickness is committed to reducing the disruption being in hospital can have on children and their families by investing in the latest research, therapies, programs and equipment to decrease the amount of time they are away from the everyday comforts of friends, family, pets and school.

National Reach Local Impact

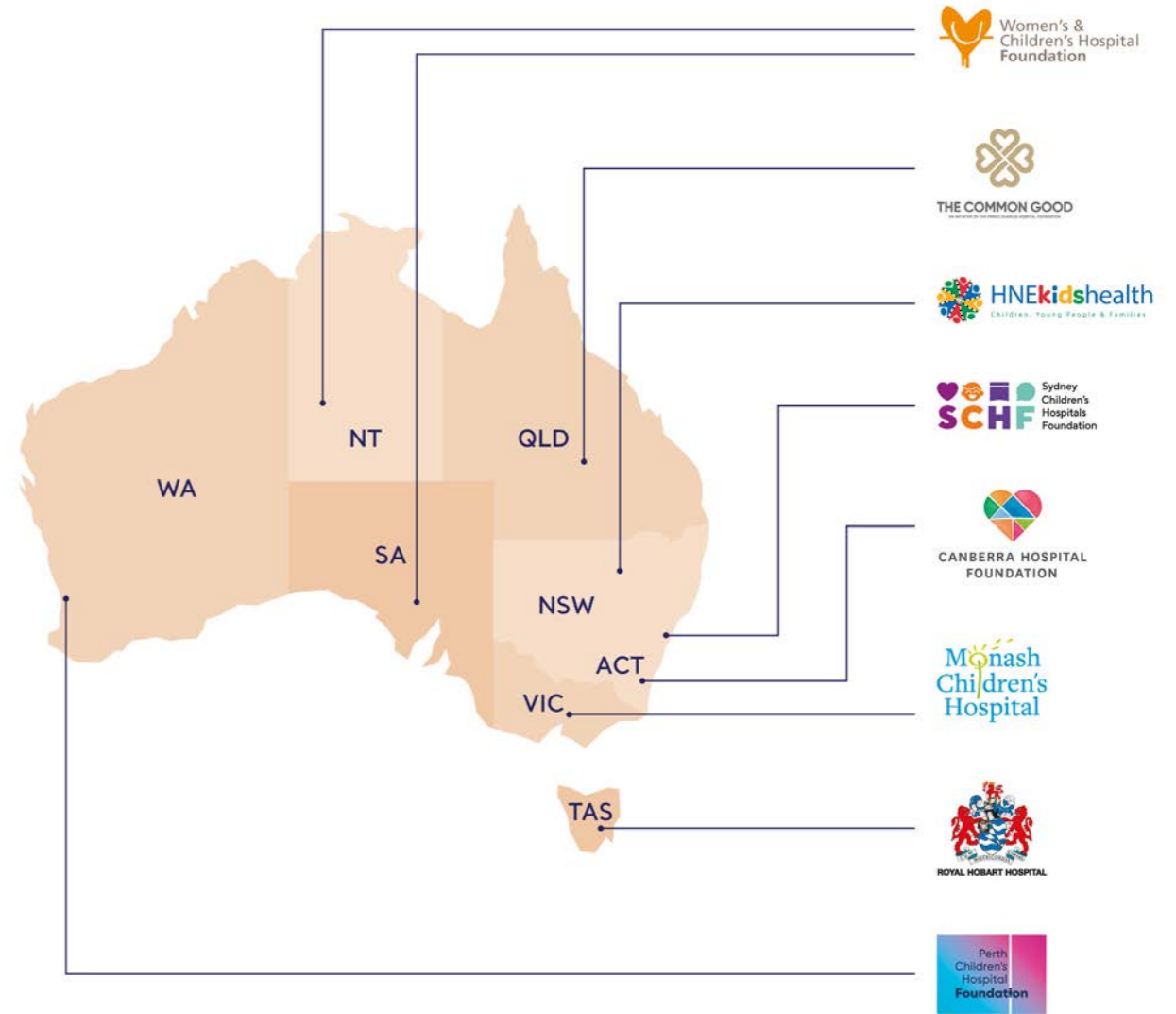
Curing Homesickness supports a national alliance of eight state-based partners to fund the latest research, therapies, programs and equipment that improve in hospital care and experience while also aiming to help deliver care at, or closer to, home. Our Alliance Partners amplify our impact, helping us reach every household in Australia. They invest the funds raised nationally into areas of greatest need at the local level – i.e. the funds raised in a state go directly into the most urgent project prioritised by the hospital for children in the area.

National acclaim for ground-breaking research

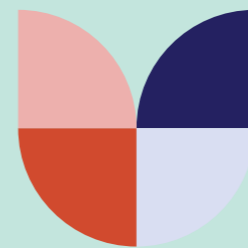
Curing Homesickness is committed to reducing time children spend in hospital and creating new pathways to avoid hospitalisation where possible. CHL directly funded a new study led by Professor Adam Guastella, Michael Crouch Chair in Child and Youth Mental Health, to investigate how the health and wellbeing of children could be improved by reducing extended hospital length of stay. The study, called 'Child characteristics and health conditions associated with paediatric hospitalisations and length of stay', found that interventions such as care coordination, tailored models of care and enhanced outpatient/ community treatment programs for high-risk groups can help get kids home from hospital sooner. In February, the study was published in the esteemed medical journal, The Lancet Regional Health, Western Pacific.

Bringing on new partners

We are excited to welcome John Hunter Children's Hospital as our new Alliance Partner, helping us connect with and deepen our impact in regional New South Wales. John Hunter Children's Hospital is a specialised tertiary referral paediatric hospital in Newcastle that provides complex medical, surgical, major trauma and neonatal care services for Northern NSW.



Map of our Alliance Partners



HOSPITALS UNITED FOR SICK KIDS

Something new is coming

To unlock new opportunities, we are transforming our identity and embracing growth while reaffirming our commitment to help sick kids and their families. As of 25 October 2023, Curing Homesickness Ltd will be known as Hospitals United for Sick Kids.

Review of strategic goals

Strategy 2: Reputation

As one of the largest and most trusted kids' health charities in Australia, we exist to help provide all children with access to the best possible health care, when and where they need it.



This year we saw the launch of our first ever brand campaign. The campaign aims to drive awareness of Sydney Children's Hospitals Foundation among the NSW public and shine a spotlight on the pivotal role that our donors, supporters, and volunteers play in improving the health and well-being of all children.

Our incredible donors, supporters and volunteers whom we refer to as the 'Movement of Many' lie at the heart of the campaign. Alongside a courageous young man, named Ollie, who represents one of the more than 158,000 sick children whose lives have been positively impacted by the support of our donors.

On launching SCHF's first brand campaign, Kate Ferguson, General Manager of Engagement said, "We are thrilled to launch this new campaign and shine a spotlight on the incredible impact that donors, supporters, and volunteers have on children's health."

At SCHF, we understand that our Movement of Many is the lifeblood of our organisation, and we are immensely grateful for their unwavering support and commitment to going all in for kids' health. Through this campaign, we hope to demonstrate the significance of their contributions in transforming the lives of sick children and reshaping the landscape of children's health.

RepTrak

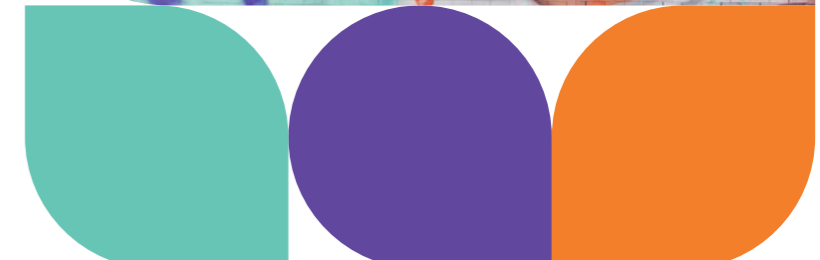
As a trusted charity, we consistently seek to reassure our community that their donated dollars are delivered to the front line of children's healthcare. We look to reputation research to help us understand what drives this trusting relationship with our Movement of Many.

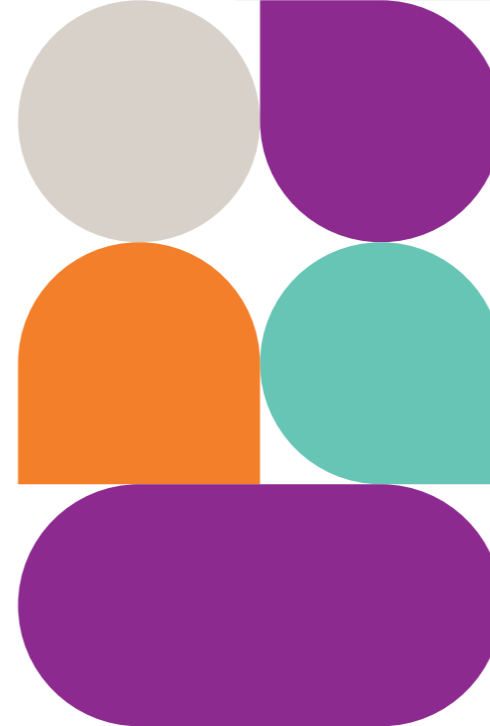
We once again engaged RepTrak – a leading provider of data-driven reputation, brand, and environmental, social and governance insights – to survey our reputation. RepTrak analyses the sentiment of key stakeholders to deliver an overall reputation score based on questions about trust, respect, admiration and esteem. This survey helps us monitor the perception of our brand as we continue to inspire the community to join with us to be all in for kids' health.

Our benchmarked reputation score was 86.2/100 and we set a goal of 92/100 by FY25. In FY23 we achieved a score of 90.4/100, remaining stable from last year. While this score is slightly below our organisational goal, it still sits comfortably within RepTrak's top/excellent range.

Familiarity with SCHF has continued to improve among consumers for the fourth consecutive year and we have seen an increase of five points since FY22. This is a testament to our new brand which better reflects the aspirations of our team, our supports and our impact on paediatric care.

Across the seven drivers of reputation, perceptions of SCHF have remained statistically stable, and Services and Citizenship remain the top two areas that our donors consider the most important. This tells us that our donors align strongly with our mission and place the most importance on SCHF making a meaningful contribution to, and impact on society by delivering high quality services and being ethically operated.





Sydney Sick Kids Appeal

Beginning on 15 May 2023, SCHF's annual Sydney Sick Kids Appeal highlighted the generosity of Sydneysiders, raising an incredible \$15.8 million across a six-week period for our state's leading children's hospitals and paediatric services, because every child in hospital is a childhood on hold.

Partnering with 7News and ARN, the Appeal culminated on 22 June 2023 with Sydney Sick Kids Day. With activations across both Children's Hospitals in Sydney, giveaways to

staff, patients and families across the entire Sydney Children's Hospitals Network, a community activation in Martin Place and a donation takeover at all the major CBD train stations in Sydney, this year's Sydney Sick Kids Day was the largest to date, bringing joy and laughter to so many kids in hospital.

This incredible result would not have been possible without the support of the community and our incredibly generous dollar match partner, Petbarn Foundation.

Light Up Xmas Appeal

Nobody loves Christmas more than kids - the anticipation, the food, the family get-togethers and, of course, the visits from Santa! But for many kids, this time of year is spent in a ward, treatment room or outreach centre.

Over the festive season, Sydney Children's Hospitals Foundation achieved a record-breaking result for our 2022 Light Up Xmas (LUX) Appeal, raising over \$11 million for sick kids. This was the first time SCHF's LUX Appeal had broken through the \$10m mark.

The LUX Appeal record-breaking result was due to generous corporate supporters such as Ausgrid, Coogee Bay Hotel, Western Earthmoving, and Sydney Markets Foundation, as well as individual donations from everyday Australians. Local community groups and fundraising drives played a big part too, raising almost \$1 million.



\$16,833,846

raised for
groundbreaking
research



Review of strategic goals

Strategy 3: Effectiveness

We continued our commitment to the highest levels of efficiency and effectiveness throughout our operations in FY23. In 2023, we successfully managed within budget, delivered our largest beneficiary contributions to date, and achieved a cost of fundraising of 27%.

Becoming an insights-led organisation

In FY23, SCHF leaders identified an opportunity to elevate our data capability, drive deeper donor analytics, and leverage marketing automation and personalisation to support effective and efficient donor engagement and communication. With Board support and endorsement, we sought to increase our capability in data and technology to better optimise our systems and push SCHF to become an insights-led organisation.

To help us achieve this ambitious goal, SCHF added three key positions – data scientist, prospect researcher and database analysts – and invested in specialised consultation with Deloitte to provide independent and expert support and guidance on the project. The project will be delivered in two phases and completed by 2024.

Improving productivity

As SCHF operates in a flexible, hybrid work model, simplifying the way we work is vital. To improve the way we work and support our staff to work more efficiently, SCHF introduced mandatory productivity training and delivered eight, two-hour sessions for all staff. This training will continue to be rolled out to new starters to ensure consistency.

Governance and risk

SCHF takes security and privacy very seriously and is constantly mitigating the occurrence of cybercrime in our digital footprint. We continue to conduct mandatory privacy and cyber security training courses for all staff members, equipping them with the resources they need to be compliant and respectful in data collection, and to mitigate the risk of a data-related breach.

Review of strategic goals

Strategy 4: Culture

We are thinkers and doers, planners and creators, helping hands and guiding lights. We are drawn from different backgrounds and perspectives – what makes us different makes it work.

Our Reconciliation journey

SCHF envisions a world where every child receives the best health care, when and where they need it, and this includes Aboriginal and Torres Strait Islander children. In 2022, we commenced work on SCHF's first 'Reflect' Reconciliation Action Plan (RAP). Our RAP is expected to be endorsed by Reconciliation Australia in December, with actions implemented throughout 2024.

Reconciliation Action Plan Working Group:

- Erica Nelson (Chair)
- Christina Butler
- Jess Avery
- Yvonne Stewart
- Anna Nguyen
- Dominic Monckton
- Cindy Packham
- Kate Ferguson

Creating an exceptional workplace

The impact of our work is very important, so we want to make sure that all our employees have a strong value proposition for being part of the SCHF team. In FY23, we made great strides in the foundational work and research for our brand-new Employee Value Proposition. Our EVP was approved by the Board in May and launched in July with benefits to be rolled out over the next two years.

Ensuring staff voices are heard

In September and March, SCHF conducted two engagement surveys to gauge our employees' feelings about working for us. At SCHF, we know how important it is to ensure all staff have a voice and feel comfortable sharing their experiences and insights into the SCHF culture. Pleasingly, the most recent survey showed that 82% of employees are engaged at work, our highest score ever and six points higher than the top 25% of NFPS in Australia, with our top scoring factors being 'Management', 'Work & Life Blend', 'Social Connection', 'Our Values', and 'Innovation'.

NSW Fundraising Team of the Year

Sydney Children's Hospitals Foundation is one of the most trusted charities in Australia, the largest children's charity in Australia, and one of the largest children's hospital foundations in the world. In November 2022, the Fundraising Institute of Australia recognised SCHF as NSW Fundraising Team of the Year. This award is a testament to the culture of excellence at SCHF and the unwavering commitment displayed by all our staff members.

Recognising our staff

Each quarter at Foundation Forum, our in-person all staff meeting, our staff members are recognised for their dedication and commitment to SCHF and kids' health with the 'All In One Awards' - a new set of staff awards established in February 2023. Staff are nominated by their colleagues in four categories: Thinker, Creator, Helping Hand, Guiding Light and All in One.



Home of Unstoppable Changemakers

Christina Butler, Trusts and Foundations Senior Relationship Manager (pictured left), was acknowledged as an awardee of the Association for Healthcare Philanthropy's 40 Under 40 Recognition Program in September 2022. Christina was recognised for her outstanding achievements in advocacy for Aboriginal and Torres Strait Islander funding needs and health outcomes, high standard and innovative approaches to donor stewardship, and active involvement in the development of Donor Journey processes and resources, among other things. The 40 Under 40 program honours the industry's brightest young leaders who have demonstrated success in their careers in healthcare philanthropy.

Leadership Development

Sydney Children's Hospitals Foundation is dedicated to building greater leadership capabilities, cultivating positive team culture and implementing innovative strategies to benefit the entire organisation. In FY23, SCHF continued to deliver our sector-leading individual and group leadership development programs. Led by the Director of Leadership Development, 29 people leaders received one-on-one and group coaching in line with SCHF's strategic objectives and individual development plans to ensure individual development, strengthen enterprise leadership and create a strong leadership pipeline and succession pathways to drive performance and minimise risk across the organisation.

All in for wellness

In line with our commitment to creating a holistically safe and healthy workplace, Sydney Children's Hospitals Foundation held an engaging Mental Health discussion panel at our all-staff Foundation Forum in March. Our three panellists - Erica Nelson, Dee Walker and Kellie Yee - shared their tips and insights around the strategies they use when they feel overwhelmed, how they 'switch off' and the types of people and organisations they may reach out to for support. All staff in attendance were encouraged to share their own insights and ask questions of the panel.



Our People

Board of Directors



Len Chersky, Chair
Appointed 8 August 2022



Anubha Sahasrabudde
Appointed 8 August 2022



Connie Carnabuci
Appointed 8 August 2022



Danny Rezek
Appointed 16 November 2021



David Nott
Appointed 25 November 2020



Elizabeth Crouch AM
Appointed 25 November 2020



Elizabeth Curran
Appointed 8 August 2022



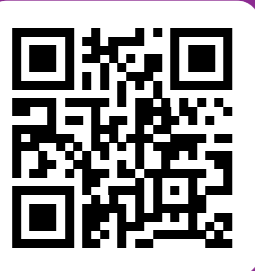
James Brindley
Appointed 19 April 2016



Dr Matthew O'Meara
Appointed 26 October 2010



Wayne Mo
Appointed 21 February 2019



Learn more about
the SCHF Board and
Executive Leadership
Team here

Our People

Our Executive Leadership Team



**Kristina Keneally,
Chief Executive Officer**
Appointed November 2022



**Stephen Taylor,
Chief Financial Officer**
Appointed May 2021



**Kate Ferguson,
General Manager -
Engagement**
Appointed September 2020



**Colin Allen,
General Manager -
Philanthropy**
Appointed September 2021



**Yvonne Stewart,
Director of Product
& Impact**
Appointed January 2015



**Erica Nelson,
Director of Leadership
Development**
Appointed March 2020



**Mariam Hares,
Director of People
& Culture**
Appointed May 2022



Our Patron

**Her Excellency the
Honourable Margaret
Beazley AC KC, Governor
of New South Wales**

Appointed May 2022



Donor story

Marie is all in for kids' health

Growing up spending most of her childhood in hospital, Marie has dedicated her time to giving back to the services that made an instrumental difference to her life.

During the COVID lockdown, Marie wanted to do more to help the kids in hospital. She loves making crafts so her mum, Santina, suggested she start creating things to sell and give the profits to support the children's hospital. That is how her little business started. Since then, her products have taken off – friends, and friends of friends were ordering, and Marie began mailing products to New South Wales, Queensland and all the way to London, Germany, and the United States.

"It's been amazing to see Marie involved in the Movement of Many. It's brought so many people together and been really energising. Marie has been out in the community spreading the word as someone who has experienced the wonderful care from the hospital, she loves giving back," says Santina.

Hear Marie's Story here



Roll of Honour

“Immortality is to live your life doing good things and leaving your mark behind.” Brandon Lee

Through their gift in Will, these generous individuals are helping to shape the future of the many kids who journey through our corridors as well as those not yet born. SCHF is deeply grateful for the positive difference they have made far beyond their lifetime. We thank them for giving kids the best possible chance to succeed.

Allen Richard Hodge

Amatul Ali

Audrey Reader

Barbara Mary Taylor

Bertha Florence Thomas

Betty Audrey Cutter

Bourke Gibbons

Brian Gallagher

Carlyle Raymond Ellis

Celia Anne Boyd

Claire Merchant

Cynthia Bernadette Sawatzky

Dawn Patricia Loomes

Dianne June Herbert

Dimitrios (Jim) Zissimpoulos

Douglas Raymond Haynes

Elaine Margaret Cater

Emma Zuleni

Eric Stanley Forster

Ethel Florence Rose Wellard

Frances Chen

Frank Holden

Garry Shirvington

Giuseppe De Bortoli

Gladys Grills

Gloria Flaskas

Harry Banfield

Irene Francess Rowe

Irene Hazel Prokop

Janet Noonan

Joan Preston

John Andrew Murray

Josephine Simelius

Josephus Wilhelmus Lommers

Joyce Evelyn Mottlee

Judith Green

Judith Winifred Anderson

Lars Oke Andersson

Lilly Mary Szczepaniak

Margaret Ann Mann

Margaret Anne Watts

Margaret June Willard

Margaret Rose Evelyn Coleman

Maria Chan

Marie Loretta McMahon

Marjorie Ethel Driver

Marjory Ogilvie Cable Rorke

Martin William Harris

Mary Theresa Stephenson

Pamela Coombs

Patricia Anne Blau

Patricia Lilian McDonald

Patricia Thirza Glennie

Patrick Burke

Paula Margaret Williams

Peter James Kennedy

Robert Alfred Billett

Robert Scot Skirving

Rosalyn Mary Asimus

Rosemary McLean Everett

Thelma Marjorie White

Trevor Lloyd Ellard

Veronica Estlyn Hardy

Walter Igor Kohut

William & Saturnina Geeves

Our donors

Thank you to our generous supporters

As one of Australia's largest and most trusted children's health charities, we make sure funds raised go directly to the front line of children's healthcare. Your support creates both immediate impact and lasting change. This is only possible thanks to the thousands of generous supporters who are all in for kids' health.



\$5,000,000 - \$9,999,999

Estate Late Marjory Ogilvie
Cable Rorke



\$1,000,000 - \$4,999,999

Coles Group

Estate Late Aram Ohanian

Estate Late Patricia Thirza
Glennie

Minderoo Foundation

Sargents Pies Charitable
Foundation

Steven Walter Children's
Cancer Foundation

The Lewis Foundation

The Medich Foundation

The Wiggs Family Foundation



\$500,000 - \$999,999

Earl and Katie Evans

Estate Late Brian Gallagher

Estate Late Celia Anne Boyd

Estate Late Dianne June
Herbert

Estate Late Irene Frances
Rowe

Estate Late Irene Hazel
Prokop

Estate Late Janet Ruth
Gormly

Estate Late Judith Green

Estate Late Lars Oke
Andersson

Estate Late Robert Scot
Skirving

Grahame Mapp Family
Foundation

Hearts and Minds
Investments Limited

Scape Australia Management

Shaw and Partners Financial
Services

The Minton Family
Foundation



\$250,000 - \$499,999

Aqualand Projects Pty Ltd

Bennelong Australian Equity
Partners (BAEP)

Big W

Bio Island (JBX Pty Ltd)

Caroline McBride

Coogee Bay Hotel

Cure4 Cystic Fibrosis
Foundation

DOOLEYS Lidcombe
Catholic Club

Estate Late Bertha Florence
Thomas

Estate Late Christina Armour

Estate Late Dimitrios
Zissimpoulos

Estate Late Giuseppe De
Bortoli

Estate Late Gladys Grills

Estate Late Kenneth Henry
Stonham

Hai Lan and Yolanda Wang

James Fairfax Foundation

Kids with Cancer Foundation

Lenity Australia Limited

Linda and David Penn

Lowes Menswear

Metasoft Technologies

Petbarn Foundation

Sporting Chance Cancer
Foundation

The Manildra Foundation

The Profield Foundation



\$100,000 - \$249,000

400in4 Charity Ride

ABC Bullion

Ace Competitions

ALSPEC

Annie Cannon-Brookes

Arab Bank Australia Limited

Australian Communities
Foundation in partnership
with Paul Ramsay Foundation

Beryl Howlett

Beulah SB Nominees Pty Ltd

Built

Bulgari

Camp Quality

Carat Australia

Christopher and Emily Stott

Costco Wholesale Australia
Pty Ltd

Deicorp Pty Ltd

Doug Howlett

Estate Late Barbara Mary
Taylor

Estate Late Dawn Patricia
Loomes

Estate Late Eric Stanley
Forster

Estate Late Judith Winifred
Anderson

Estate Late Lilly Mary
Szczepaniak

Estate Late Peter James
Kennedy

Estate Late Robert Alfred
Billett

Estate Late Rosalyn Mary
Asimus

Fire & Rescue NSW

George Shalala

Holdmark

Howard Smith Wharves

Humpty Dumpty Foundation

Hyundai Australia

Hyundai Help for Kids

Imc Pacific Foundation

JDH Capital

Jiaheng Chan	Redkite	The Research Foundation, Cerebral Palsy Alliance	Estate Late Josephine Simelius	Karinvir Singh Gill	Realtime Business Solutions Pty Ltd
Kay Van Norton Poche	Richard Weinberg	The Shaw Foundation	Estate Late Josephus Wilhelmus Lommers	Katoomba Boutique Op Shop	Richard Shalala
La Trobe Financial	Robert Albert	The Tie Dye Project	Estate Late Martin William Harris	King Living Foundation Pty Ltd	Robert Whyte
Libby Albert	Saunders Family Foundation	Tony McCullough Foundation Trust	Estate Late Paula Margaret Williams	Lady Fairfax Charitable Trust	Rotary Club of Sydney Cove Benevolent Fund
Little Big Steps	Sell & Parker Pty Ltd	Tour de Cure	Gai Wales	Liliane Novak	Seven Miles Coffee Roasters Pty Ltd
Marco Rossi	Stephanie Stokes	WEM Civil	Ginette Snow	Luke Hepworth	Suan Yeo
Melissa Lewis Foundation	Stephen and Emma Gaitanos	Woodhead Family Benefaction	Gladys Whitton	Maatouks Racing Group	Sydney Kids Committee
Michelle McGimpsey	The Australian Genies Inc		Global Pay Co	Makifim	Sydney Markets Foundation
Mike Cannon-Brookes	The Balance Foundation		Glow Media Pty Ltd	McGrath Subaru Liverpool	The Flicker of Hope Foundation
Nassib El Thoumi	The Dee Dee Foundation		Helen Economus	Michael Coombs	The Freedman Foundation
Oxanda Education	The John and Lois Turk Charitable Gift		Henry and Wendy Rose	Momenta Advisors	
Peg Dodd	The Kids' Cancer Project		Highland Property	MPA	
Perpetual Foundation	The Petre Foundation		ICAP Australia Pty Ltd	Nielsen Foundation	The Luscombe Family Foundation
Phillip Cochineas	The Power Family		Innovative Support Australia	Noel Carroll	The Mill House Foundation
Rally For Recovery Inc	The Redan Foundation		Intrepid Travelling Troupe	NSW Police Force	The Ruth Marie Sampson Foundation



\$50,000 - \$99,999

Alex Cornish	Chinese Building Association of NSW	Dominic and Kate Roche	James & Nina Redfern	Paul & Judi Lewis	Urban Apartments Pty Ltd
APCD Pty Ltd	Christina Quinn	Dunmain Pty Ltd	JDH Capital	Perpetual Foundation - Kevin Darrell Clarke Endowment	Visy
Arc UNSW Student Life	Christopher & Elsa Flynn	Endeavour Energy	Jufron Investments	Pherrus Financial Services	Waratah Education Foundation
ATLAS by LJ Hooker	CNX2SPORTS	Ernest Bickford	Julie-Anne McMillan (demoyer)	Pro Bros Providore	Wentworthville Leagues Club Ltd
Ausgrid	Commercial Travellers Cot Fund	Estate Late Allen Richard Hodge	June Oriel	Procure Group	Yvonne Lefort
Australian Fund Managers Foundation	Coreena Cochineas	Estate Late Carlyle Raymond Ellis			
Bryce Sceresini	Craig and Susie Laundy	Estate Late Claire Merchant			
Buildcorp Group	Crownland Developments	Estate Late Ethel Florence Rose Wellard			
Canberra Grammar School	D Sze Summer	Estate Late Halyna Chrapacz			
Children's Tumour Foundation of Australia	Dainere's Rainbow Brain Tumour Research Fund	Estate Late Harry Banfield Hugh			
Child's Play Charity	David Cable				



\$10,000 - \$49,999

Abadeen Group	Adam Flaskas	Alina and Scott Barlow
ACCO Brands Australia Pty Ltd	Adès Family Foundation	Alistair and Kate Champion
ACCOR Stadium	AGS World Transport	Allens
	Alex Cornish	Allied Express Transport
	Alicia Harper	Amazon Australia

Amy Hyder	Blackmores Ltd	Coogee United Football Club	Estate Late Frances Chen	Garry Kam	HomeWorld Group of Companies
Amy Wong	Blake Gilfillan	Create Media Access P/L	Estate Late Frank Holden	Gary Allen	Horizon Built
Amyson Pty Ltd	BNP Paribas	Dads of the Hills	Estate Late Garry Shirvington	Gavin Rubinstein Group	Howard's Storage World
Anna and Niall Lenahan	BNT Management Pty Ltd	Daly Cherry-Evans	Estate Late Janet Noonan	Generate Property Group	Hyun Jung Hong
Andrew Jolliffe	Boating Syndication Australia	Damian and Justine Roche	Estate Late Joan Preston	George & Janet Parker Memorial Trust (EVOLHOPE)	IC HOMES PTY LTD
Andrew Michael	Borgnis St Christmas Lights	Daramalan College	Estate Late John Andrew Murray	George Ajaka	Infinity Property Agents
Angela and Nicholas Curtis	Borgnis Street Residents	David & Gillian Gale	Estate Late Joyce Evelyn Mottlee	Georges Apparel Pty Ltd	Intelligent Foundation
Anthony Maroun	Brea Arkins	David Di Pilla	Estate Late Margaret Ann Mann	Gerald Malouf & Partners	Intermain
Antonia Tupai	C & M Antoniou Pty Ltd	David Johnston	Estate Late Margaret Rose Evelyn Coleman	Gilbert & Roach	Italian Affair Committee Ltd
Arthur Tzaneros	Cadman Family Foundation	David Panton	Estate Late Marjorie Ethel Driver	Glenorie Bakery	Jacinta Cowell
Asthma Australia	Cam Donation	David Ritch	Estate Late Marjorie Ethel Driver	Godolphin Australia Pty Ltd	Jacky Yencken
Australasian Order of Old Bastards (Southport)	Campbell and Francesca Duncan	Davies Family Foundation	Estate Late Mary Theresa Stephenson	GOMON Pty Ltd ATF V&C Comino Foundation	Jaguar Land Rover Australia
Australia Post - Head Office	Canbou investments	Dean Teasdale	Estate Late Patricia Anne Blau	Google Australia	James and Jessica Auswild
Australian Children's Music Foundation	Carnival Cruise Lines Australia	Deku	Estate Late Patrick Burke	Gordon Jackson	Jane O'Connor
Australian Golf Club	Cassandra Nicholls	Dell Technologies	Estate Late Shenay Yusuf	Gough Recruitment	Jason Rubenstein
Australian Philanthropic Services Foundation	Central Real Capital	Department of Foreign Affairs and Trade (DFAT)- Council for Australian-Arab Relations (CAAR)	Estate Late Thelma Marjorie White	Goulburn & District Cystic Fibrosis	Jennifer Houden
Australian Stockbrokers Foundation Ltd	Champion Family Foundation	Digi Direct	Estate Late William Osborne Geeves	Graham & Joanne Russell	Jennifer Staley
Austunnel Pty Ltd	Charles Tilley	EA & N Hulak Foundation	Estate Late Veronica Estlyn Hardy	Grant Peters	JEPS Foundation
B.Braun Australia	Children's Cancer Welfare Services Inc	Earthworx Group	Estate Late Violet Falls	Great Aussie BBQ	Jim McIntyre Foundation
Baillie Family Foundation	Chloe Flutter	Eastern Suburbs Law Society	Event Hospitality & Entertainment Limited	Greek Young Matrons' Association	JIVARO Recruitment
Baronja Investment Pty Ltd	Chris Olliver	ECOYA - New Zealand	Fergus Doyle	Gresham Partners Limited - Sydney	Joann Lewis
Bart Ward	Chris Tynan and Nancy Kim	Eddie Yacoubian	Fight Cancer Foundation	Hammond Family Foundation	John Holland Sydney Gateway Project
Baseline Projects	Circle Red Watches	Emily Larsen	Flexible Packaging and Label Manufacturers Australia	Hantomeli Foundation	John Kamara
Belinda Young	City of Sydney RSL Club Ltd	Era Polymers Pty Ltd	Frank And Grace Panetta	Havencab Pty Ltd	Johny Tran
Ben Alexander	CLMU Pty Ltd	Estate Late Dianne Elizabeth Mcindoe Wishaw	Frank Calabria	Havenwood Tiny Homes Pty Ltd	Joseph Fayyad
BIC Australia	Cloud9Roofing & Guttering Pty Ltd	Estate Late Audrey Reader	Frank Nicholopoulos	HealthShare NSW	Joseph Pagliaro
Bill Malouf	CommBank Staff Foundation	Estate Late Betty Audrey Cutter		Heartland Motors Pty Ltd	Joshua Penn and Ben Palmer
Bing Lee	Commonwealth Bank - Head Office	Estate Late Bourke Gibbons		Hickory Constructions Group	Joshua Toth
Biviano's Italian Restaurant Dural	Comsol Pty Ltd	Estate Late Cynthia Bernadette Sawatzky		Hitec Drainage Pty Ltd	Judith Neilson
					Judy Phillips
					Jufron Carbon Pty Ltd

Julie and Francis Au-Yeung Family Trust	Lego Australia Pty Limited	Marygold Charitable Foundation	Ngunnawal Aboriginal Corporation (NARCORP)	Perpetual Foundation - Desmond Prentice Charitable Fund	Rio's Legacy
Julie Bishop	Lejla Ubiparipovic	Matt Barrie	Nicholas Curtis	Perpetual Foundation - FW & CF Penberthy Endowment	Rita Valentino
Julie Ormaechea	Leon Ball	Matthew Hyder	Nici McCarroll	Perpetual Foundation - George and Joyce Graves Endowment	Rob & Filomena Collins
Justin Brown	Leslie Elmslie	Matthew Yencken	Nine Network Australia Ltd	Perpetual Foundation - H & R Israel Fund	Rob White
Kapstream Capital Pty Ltd	Lewis Land Group	Maude Tzaneros	Niranjan Ganeshan	Perpetual Foundation - J & G Bedwell Endowment	Robert and Sally Ell
Karen De Coque	Liangrove Foundation	MAX Build	Nona Holden	Perpetual Foundation - Sibley Endowment	Robert Nugan
Karen Tucker	Lions Club of Bondi Inc	Mazda Foundation	NSW Chemist Golf Club	Perpetual Foundation - Sir Robert & Lady Mollie Askin Charities Trust (Hospitals)	Robert Phillips
Karina Ezekiel	Lions Club of West Pennant Hills - Cherrybrook Inc.	McCabes	NSW Ports	Perpetual Foundation - The JB Bedwell Endowment	Robyn Pickworth
Karl & Olivia Fretwell	Lions NSW-ACT Sight & Health Foundation	Megan Grace	NSW Rural Fire Service	Perpetual Foundation - The K & G Gluck Trust	Roluke Pty Ltd ATF Scott's Motors Unit Trust
KASE BUILDING AND RESTORATION GROUP	Lisa Alexander	Melanie & Eddie Listorti	Nuages Holdings Pty Limited ATF Matthew Peter Trainor Family Trust	Perpetual Foundation - The Page Family Endowment	Ronald Kaiser
Kate Spanton	Lotus Charity Incorporated	Melina Turrisi	Nudie Foods Pty Ltd	Perpetual Foundation - Pete Manettas	Rotary Club of Mosman
Katering Pty Ltd	Lunico Agri Pty Ltd	Melinda Wright	Nuna Baby Australia Pty Ltd	Perpetual Foundation - Philip Spanton	Roy Maxwell
Katherine and Greg Dodds	Lynn Yager	Michael Grace	Nuwarra Rd, Moorebank Christmas Lights	Perpetual Foundation - Phoenix Building Approvals Pty Ltd	Royal Motor Yacht Club Broken Bay
Kelly Morgan	MA Foundation	Michael Miller	Olivia Pawlak	PhoneCycle Pty Ltd	Royal Wolf Trading Australia Pty Ltd
Kidstuff	Macoun Charitable Foundation Pty Ltd	Michael Ormaechea	Omnia Aqua Pty Ltd	Platinum Cables	Rudi McGregor
Kim Maloney	Macquarie Group Foundation	Michael Rothner	Ottomin Foundation	Premium Strata	Sally Faerber
Kimalo Foundation	Macquarie Group Limited	Michael Stormon	Pallas Group	R & A Family Holdings	Sam Princi
King & Wood Mallesons	Madina Tao	Mirvac Homes (NSW) Pty Ltd	Pallet Logistics	Radisha Zivanovic	Sandhaven Foundation
Kira Casey	Maggie Li Portraits	Misha De Moyer	Parabaharan Satchithanathan	Rafalog Pty Ltd	Sanofi Genzyme
Klara Denny	Maggie Yu	Mitsubishi Electric Australia Pty LTD	Paragon Steel Fabrication Pty Ltd.	Raghubinder Gill	Sarah Brookes
Koda Capital	Mandy Fu	Monika Tu	Patricia McPhail	Richard and Jane Freudenstein	Scene Media Consultancy Pty Ltd
Kwan Chun Presbyterian Church	Manly-Warringah Sea Eagles	Morgan Stanley Australia	Patrick Baldock	Richard O'Connor	Schaffer Foundation Pty Ltd
LABOURPOWER - Recruitment Services	Mark Arnold	Mounties Group	Patrick Teodorowski	Ricky Richards	Sean and Andromeda Neale
Landmark Group Australia Pty Ltd	Mark Bennett	Music for Abby	Paul & Elizabeth Warren		Seven Network Limited
Lanson Partners	Mark Mezrani	Mustang Owners Club of Australia (NSW)	PayPal Giving Fund		Shani Smith
Law Rocks	Mark Nelson	MWP Coating	Perpetual Foundation - Broadwaters Foundation		Sharon Ivany
Lawrence Myers	Markham Corporation Pty Limited	Nadia Badawi & John Keogh	Perpetual Foundation - Centenary Foundation - Trust of Estate Late Violet Falls		Shida Kebriti
Leanne Habib	Martin Bailey	Narrabeen North Public School			Simon Fox
Lederer Group	Martin Richards	News Corp Australia			Sir Joseph Banks Hotel

Smith Charitable Fund	The Jackson Foundation	Vanessa Fennell
Snooze Alexandria	The John Paul Foundation	Vaucluse Car Club
Stage Artz	The Macintosh Foundation	Victor & Chrissy Comino
Stanika Jonanova	The Marshall Family Foundation	Victoria Montano
Stephen Harris	The Penn Foundation	Vinco Hardware Pty Ltd
Steve and Carrie Bellotti	The Pratt Foundation	Vivienne Court Trading Pty Ltd
Strada Investments Pty Ltd	The Primary Club of Australia	Vivienne Hannigan
Stuart Jackson	The R A Gale Foundation	Warringah Anglers
Subaru Australia Pty Ltd	The Rix Group Pty Ltd	Waverley College Junior School
Sudha Vanthavasi	The Schwinghammer Foundation	Wayne Mo and Katherine Trotter-Mo
Supagas	The Scotney Group Pty Ltd	Westfield Shoppingtown - Warringah Mall
Suttons Motors - Homebush	The Todd Family Foundation	Westpac Head Office
Sydney City Lexus	Theissling Philanthropic	Wilson Asset Management
Sydney Machina Social Club	Thi Shakespeare	WZ & Co Pty Ltd
Sydney Market Credit Services	Thomas Hamel	Yieldbroker
Sydney Slice	Thor Capital	Zena K'dor
Sydney Trains - Head Office (State Transit Authority)	Tim Odilo Maher and Victoria Montano	
Sylvia Foster Trust	Tony Denny	
The Adamsas Family	Tony Geagea	
The Centre for Volunteering	Tony Wales	
The Children's Help Foundation	Tonya Miller	
The Collegiate of Specialist Music Educators	Trang Tran	
The Corio Foundation	Transurban WestConnex	
The Cornucopia Committee Inc	Triama Investments	
The Crane Industry Council of Australia	Tribeca Investment Partners	
The Done Group	Truckmate Australia Pty Ltd	
The Finger Family Foundation	Trust for Estate of Robert John Finlay	
The Graf Family Foundation	Trustees For Estate Late Leslie Allan Maurer	
The Grounds	Unity Bank	



\$28,586,688

raised for amazing clinical care



Support milestones

\$1 million milestone

Sydney Children's Hospitals Foundation is honoured to have ongoing support from many generous donors who want to change the lives of sick kids and their families. In FY23, many of our passionate and dedicated supporters achieved a significant milestone with their philanthropic support.

Champion - \$1,000,000 - \$4,999,999

Rally for Recovery

This year, Rally for Recovery spread hope all the way from Tomakin, on the far south coast of NSW, to the Kids Cancer Center (KCC) in Sydney. Their unwavering commitment to raising funds for KCC research is both inspiring and heartwarming. They are fully dedicated to supporting KCC's mission of achieving a 100% cure rate for childhood cancer. So far, Rally has successfully raised over \$3 million towards this noble cause, and they show no signs of slowing down.

Symbio Wildlife Park

The Symbio Wildlife Park gifted entry tickets to patients, families and frontline staff within the Sydney Children's Hospitals Network. There was a total of 102,610 entry tickets provided which equated to a value of \$4,309,620. These entry tickets to the wildlife park have given sick kids in NSW the joy to visit their favourite furry or scaly friends and spend the day with their family rather than in a hospital.

oOh! Media

oOh! Media have been a supporter of Sydney Children's Hospitals Foundation since 2014. As Australia's leading out of home (OOH) company they have supported SCHF to elevate and maximise our campaigns by offering gift

in kind media placement for nearly ten years. This has totaled over \$1.1m of support, helping SCHF raise millions of dollars to support sick and injured children across NSW and share the stories of the brave and inspiring patients across the Sydney Children's Hospitals Network.

At every point in our partnership, oOh! Media have been on hand to support SCHF with expert knowledge on which placements will best suit our campaigns and how best to maximise our materials. We are so grateful for the support of oOh! Media and we look forward to the next ten years of our partnership.

GlaxoSmithKline

GlaxoSmithKline has championed Sydney Children's Hospitals Foundation since 1991. Over those 32 years, they have supported our gala dinners, fundraised in the workplace and provided grants for research. They have raised over \$1.2m to support SCHF across many different focus areas. GSK has a commitment to positively impact over 2.5 billion people by the end of 2030 and we are excited to work with them towards this goal.



Scape

Scape has had a long and generous relationship with SCHF since 2019, which started with the Scape Founders: Craig Carracher AM and Stephen Gaitanos. Whilst the relationship began with the founders, it has evolved and flourished over the years, with the whole company now behind the partnership.

Scape's team have participated in the Walk for Kids with Cancer, volunteered at Sydney Children's Hospital, Randwick, and several initiatives were planned throughout the year for students and staff to be actively involved. It's important to Scape that they build awareness around a philanthropic mindset for the next generation, ensuring there is a legacy for 'better tomorrows'.

Ottomin Foundation

The Ottomin Foundation has positively impacted the lives of children across the Sydney Children's Hospitals Network for the past 22 years. The Ottomin Foundation first started supporting The Chronic Illness Peer Support (ChIPS) program at The Children's Hospital at Westmead. This service is run by young people for young people and offers psychosocial support through peer engagement for people aged 12-25, living with chronic health conditions. This program supports young people to build a community that is centred on shared experiences and delivered through a variety of peer-led content and projects. But

the Ottomin Foundation's support did not stop there! They have also been a long-time supporter of Bear Cottage's Music Therapy Program and have provided funding to the in-house Music Therapist. Through this ongoing support, music therapy at Bear Cottage has become a vital part of the holistic care that is provided. This would not be possible without the ongoing partnership with the Ottomin Foundation.

Mill House Foundation

The Mill House Foundation began their journey of support in 2003, funding initiatives at Sydney Children's Hospital, Randwick. Now, the Mill House Foundation provides vital funding across the Sydney Children's Hospitals Network through SCHF. This includes Assistants in Nursing (AINs) at Bear Cottage, who work very closely with the nurses and are provided with a framework of continuous learning in all aspects of nursing care and are supported, nurtured, and mentored. They are provided with the opportunity to observe and provide nursing care to children with complex and chronic care needs, within their scope of practice. They are supported to build therapeutic relationships with the child and their family and often form very special and supportive relationships with the siblings that are in-house. With the continued funding commitment of the Mill House Foundation, Bear Cottage has been able to sustain the employment of qualified AINs who learn about the nature of working in a children's Hospice.

Holdmark

Holdmark is a family-owned business founded by Sarkis Nassif. For more than 30 years, Holdmark has transformed many of Sydney's urban landscapes to quality living, working and playing environments through exceptional residential and retail communities. The Nassif family channels the proceeds of their hard work into causes and communities close to their hearts. This includes funding the John Paul Foundation, in honour of Sarkis and Bernadette Nassif's son, which has benefited clinicians and patient families at The Children's Hospital at Westmead. Most recently, Bernadette Nassif and Kristy Ann Nassif-Elias joined the Gold Dinner Committee and shared their family's experience with The Children's Hospital at Westmead at our flagship Gold Dinner, particularly highlighting how many doctors, nurses, allied health professionals and medical equipment have helped to care for their son. On behalf of her family, Bernadette made a pledge of \$1M towards the The Children's Hospital at Westmead Kids Complex Care Centre, to be known as the Kookaburra Centre. The Kookaburra Centre will combine a multidisciplinary model of care with state-of-the-art infrastructure to provide a genuinely innovative healthcare experience.

WEM Civil

WEM Civil has partnered with SCHF for over 30 years. With a personal connection to the Hospitals, WEM have consistently engaged in fun activities to support the Foundation and have a total lifetime giving of \$2,103,966.46. Their engagement in Corporate Volunteering, our Appeals, and the Oesophageal Atresia (OA) Greenlight Project in honour of the WEM family has shown that giving back is easy! WEM Civil has also created a brilliant driveway for The Children's Hospital at Westmead to ensure emergency vehicles have proper access to the Hospitals, with an added bonus of SCHF and the Network being able to host engaging outdoor events. More recently, WEM came on board once again as a partner for the SCHF Grand Prix 2023. A big thank you to WEM Civil for always being one of the first donors to put their hand up to go all in for kids' health.



Woodhead Family Benefaction

The collaboration between the Woodhead Family Benefaction and The Children’s Hospital at Westmead has been truly transformative. Their generous support has played a pivotal role in enabling the development, research, and dissemination of the Westmead Feelings Program, an innovative emotion-based program. The Woodhead Family Benefaction’s ongoing commitment and contributions have undoubtedly been instrumental in enhancing the mental health and overall well-being of children and young individuals with autism and intellectual disabilities since 2013. A notable highlight has been the substantial advancement and digitisation of the program. This digital evolution has led to the creation of “The Feelings Program” and the development of “The Feelings Program for Autistic Adolescents,” with a specific emphasis on those with mild intellectual disabilities or additional learning support needs. The partnership’s transformative nature, vision, and commitment to the well-being of children and young people with autism and intellectual disabilities continue to make a lasting impact, both within Australia and internationally.

Sporting Chance Cancer Foundation

Since 2005, Sporting Chance Cancer Foundation has provided long-term support to children and young people with cancer and their families in rural and regional areas of New South Wales. Sporting Chance Cancer Foundation support the Mark Taylor Outreach Program, in collaboration with The Cancer Centre for Children at The Children’s Hospital at Westmead, which helps bridge the gap in cancer care services for families residing in remote

and regional parts of NSW. This plays a crucial role in providing ongoing education, support, and safe medical care to regional families with an emphasis on delivering care as close to the patient’s home as possible to minimise the need for families to travel long distances for specialised medical attention. Following this success, in 2022, Sporting Chance Cancer Foundation pledged three years of support to The James Tedesco Outreach Program at the Kids Cancer Centre, Sydney Children’s Hospital, Randwick. This program aims to strengthen and build relationships with staff in regional medical hospitals to ensure greater support for children with cancer and their families. By partnering with SCHF, The Cancer Centre for Children, and the Kids Cancer Centre, Sporting Chance Cancer Foundation is contributing to the maintenance of high standards of care within shared care facilities. This collaborative effort ensures that patients across NSW, regardless of their location, receive care and support that are of the utmost quality, safety, effectiveness, and efficiency.

Melissa Lewis Foundation

Supporting SCHF since 2015, Melissa Lewis Foundation first provided support to Bear Cottage helping fund a Child Life Therapist for five years. The Child Life Therapist’s work alongside the Music and Art Therapist, social workers and members of the nursing team to ensure that all families are well supported and receive the best possible care. Then from May 2021, their support continued with funding for an oncology social worker position. Most recently Melissa Lewis Foundation has pledged \$3M to Neurology and is the lead donor for the NRCCC as part of the redevelopment of Sydney Children’s Hospital, Randwick.



Grahame Mapp Family Foundation

Established in 2013, The Grahame Mapp Family Foundation exists to support the most vulnerable and at-risk in the community, particularly children, and people experiencing homelessness, as well as the sick, disadvantaged, and disabled. With Grahame’s family – daughter Penny, son Christopher and wife Sue – on hand as Directors of the Board, the family’s foundation supports the arts, sporting groups and medical organisations.

When Grahame’s granddaughter Avery needed a liver transplant at just 7 months old, he generously funded the refurbishment of the Dr Albert Shun Outpatients Clinic at The Children’s Hospital at Westmead in 2023 (pictured above). The generous donation of \$1.15 million to fund the refurbished clinic and turn the outdoor space into a garden oasis for sick kids – officially named Avery’s Garden (pictured top right) – has made an incredible difference to the experience and care of transplant patients at the children’s hospital, their families and for the staff that care for them.

Support milestones

\$5 million milestone

Advocate - \$5,000,000 - \$9,999,999

Medich Foundation

For more than 10 years, The Medich Foundation has contributed significantly across the Sydney Children’s Hospitals Network, the impact stretching from bench to bedside. From funding world-class equipment, research grants and the ZERO Childhood Cancer Program, to the redevelopment of clinical spaces within The Bright Alliance. Most recently, they have contributed two leadership gifts of \$5 million to the Minderoo Children’s Comprehensive Cancer Centre, and \$1 million in support of the Children’s Cancer Centre and Advanced Therapeutics (CCCAT). A family of dedicated philanthropists, The Medich Foundation has supported a significant investment in areas of health, community and the arts with over \$12 million dollars of philanthropic support.

Hancock Prospecting

Hancock Prospecting and its Executive Chairman, Mrs. Gina Rinehart, are committed to supporting initiatives aimed at improving the lives of women and children in our community. Most recently, Hancock Prospecting contributed a generous leadership gift of \$5 million dollars through our flagship Gold Dinner to raise funds for The Kookaburra Centre at The Children’s Hospital at Westmead. The centre will be the first Complex Care Centre of its kind in Australia, caring for children with complex conditions and is expected to open in 2025.

Minderoo Foundation

With an outstanding commitment of \$20 million, Minderoo Foundation is helping to create Australia’s first children’s comprehensive cancer centre. Opening in Sydney in 2025, the Minderoo Children’s Comprehensive Cancer Centre will co-locate more than 900 cancer scientists, researchers and clinicians to better integrate research into clinical care. The vision for the Minderoo Children’s Comprehensive Cancer Centre is to be the leading children’s comprehensive cancer centre worldwide providing for the seamless integration of clinical care and research, with a goal of putting an end to childhood cancer.



Support milestones

\$10 million milestone

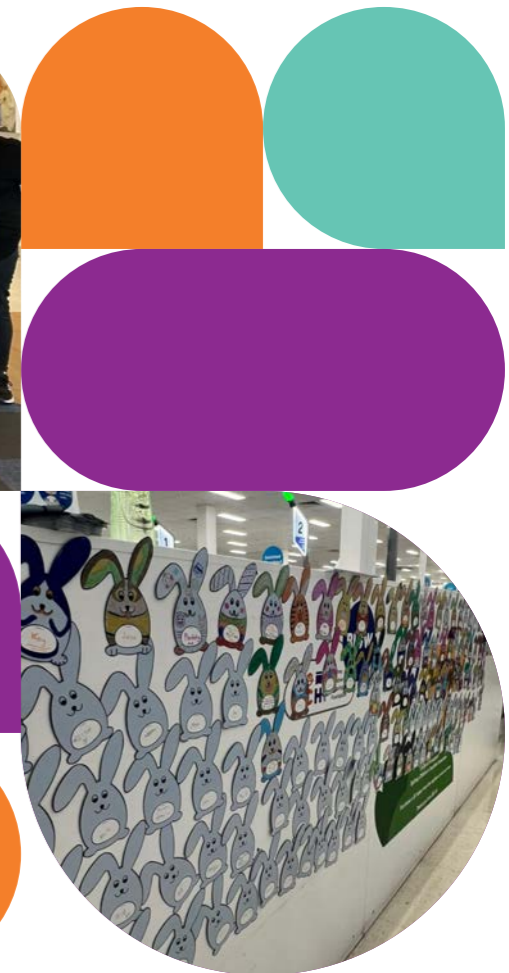
The Royal Alexandra Society - \$10,000,000 - \$24,999,999

Big W

As one of our longest standing and largest donors, BIG W has been raising funds for Sydney Children’s Hospitals Foundation since 1994. Over their lifetime of giving, Big W have contributed an incredible \$12.3 million towards kids’ health.

Big W’s fundraising activities take place across stores state-wide, with three token campaigns in FY23. This is complemented by their workplace giving and community fundraising.

In FY23, Big W raised \$376,837 for SCHF, with year-on-year donations increasing markedly. To thank Big W, the SCHF team were delighted to visit some of the wonderful stores across ACT and Sydney region during the Easter Token Campaign.



Financial Summary

In FY23, SCHF generated a record-breaking \$88.3 million in fundraising revenue, which includes \$23.5 million in pledges. This was complemented by \$7.2 million of other operational and investment revenues. We donated \$51.6 million towards the front line of children's healthcare, including \$50 million for specialised services and research across Sydney Children's Hospitals Network.

Whether it's contributing towards our three key funding areas, making a difference today, or working to shape tomorrow, every donation is revolutionising paediatric healthcare.

Despite the unstable social and economic environment brought on by the pandemic and cost of living pressures, our Movement of Many – including our staff, supporters and donors – continued to come together like never before and advocate for the patients and families that SCHF serves.

With that unwavering support and generosity, along with the return of some of our key initiatives, we are proud to report that in FY23 we generated a record-breaking \$95.4 million in total revenue (including pledges) – a figure we're extremely proud of. SCHF also received an incredible \$4.1 million in gift-in-kind, products and services provided to support patients, families and SCHN staff or reduce costs across both SCHF and SCHN.

There's no doubt that that last few years have seen many forks in the road. But, with strong leadership and governance, as well as the tenacity demonstrated by our donors, SCHF achieved transformational results.

These results give families hope that a breakthrough is one step closer, it gives healthcare professionals hope for new treatment options and equipment, and it gives sick kids hope that one day soon they can hopefully get back to the lives they love.

Grant Contribution

During the 12-month period ending 30 June 2023, SCHF contributed \$51.6 million towards improving child health, this compares to contributions of \$40.2 million for the previous 12-month period. We invested these vital funds in three core areas: research, clinical care, and patient experience.

Of the \$51.6 million contributed, \$49 million was in support of SCHN, which includes Sydney Children's Hospital, Randwick; The Children's Hospital at Westmead; Bear Cottage; NETS; and Kids Research. The remaining \$2.6 million was donated to key child health partners to help provide all children with access to the best possible healthcare.

Income

Gross income for the 12 months to 30 June 2023 was \$71.9 million compared to \$73.3 million for the 12 months ended 30 June 2022. There was an increase in Donations and Fundraising revenue, that being \$42.5 million for FY23 compared to \$38.1 million for FY22. This was the result of a fantastic fundraising effort which included a record-breaking amount raised at Gold Dinner of \$19.2 million (received/pledged). This was offset by a decrease of \$7.2 million in both Bequests and Capital appeals revenue.

Investment Update

Net Investment income for the 12 months ended 30 June 2023 was \$5.7 million compared to a net loss of \$3.4 million for the 12 months ended 30 June 2022. This increase was primarily due to a rebound in financial markets, and additional contributions to the portfolio from free cash flow. The total value of the investment portfolio as at 30 June 2023 was \$64.8 million (\$53.7 million as at 30 June 2022). The purpose of the SCHF investment portfolios is to maximise medium-term and long-term returns within reasonable and prudent levels of risk while growing the underlying capital of SCHF to offset the effects of inflation in the long term.

Expenditure

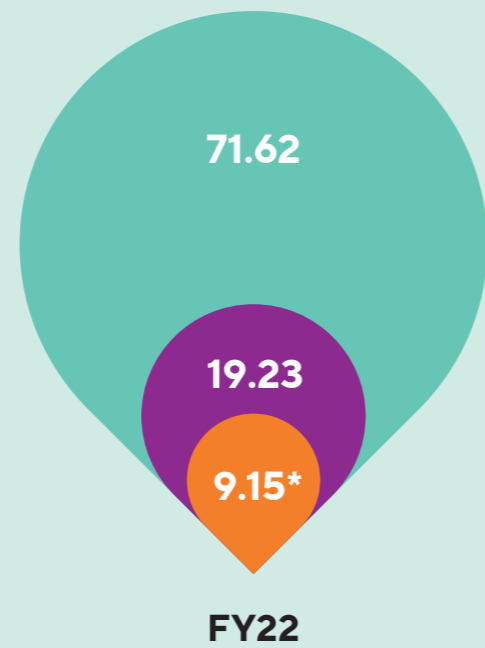
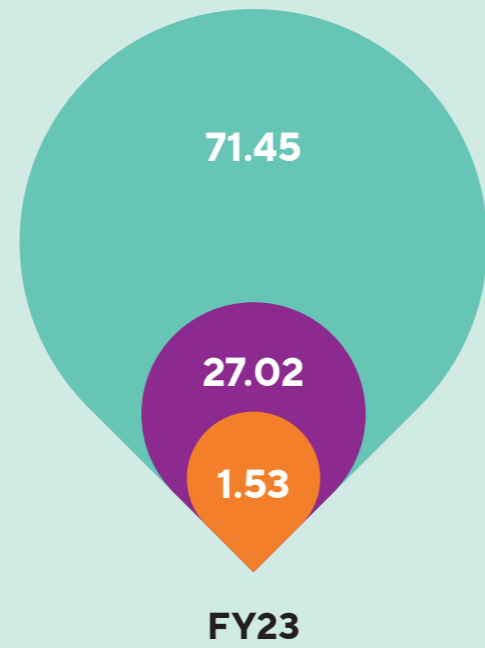
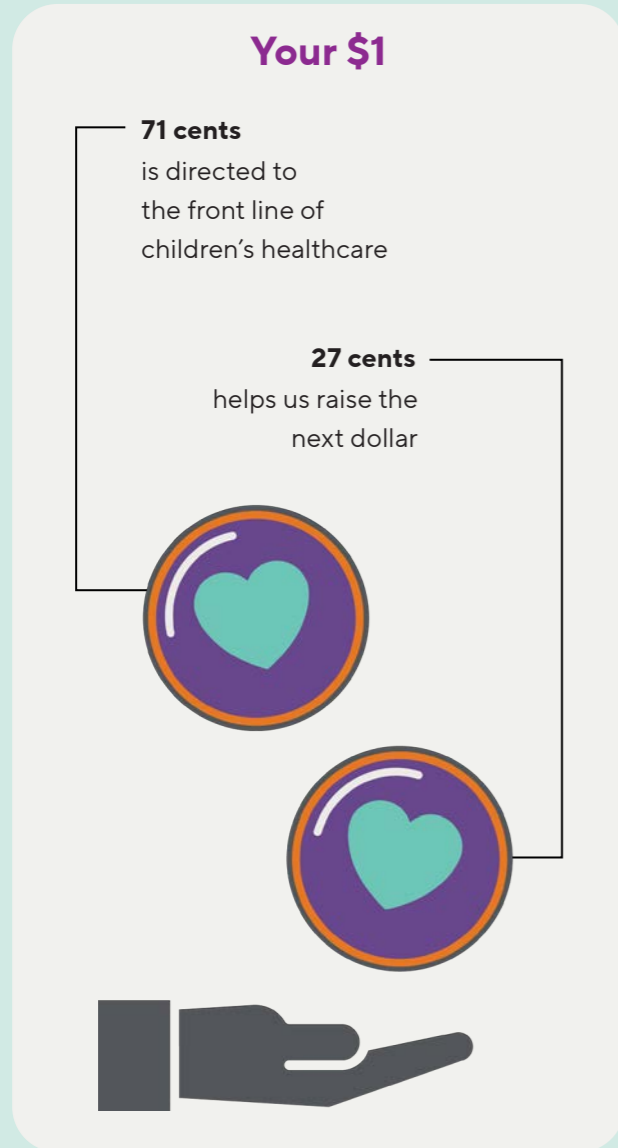
Fundraising and operational expenditure was higher for the 12 months ended 30 June 2023, being \$25 million compared to \$15.6 million for FY22. This increase was driven by an investment in people including the introduction of an industry leading Employee Value Proposition policy aimed at retaining and attracting the best available talent. There was also investment in systems aimed at driving efficiency and data driven decision making. In this regard, SCHF consulted with an independent third-party to provide support in scoping and implementing a data analytics framework and automation tools. This project will be completed in FY24. Retail (Café and Gift Shop) was in line with the previous reporting period.

Balance Sheet

The SCHF balance sheet remains in a very strong position with total net assets of \$87.1 million. This includes the specified/restricted and unspecified/unrestricted reserves of \$65.9 million and \$20.1 million, respectively. There was a reduction in cash and cash equivalents from \$35.9 million in FY22 to \$19.7 million in FY23 due to the transfer of free cash flow from operational bank accounts to the investment portfolio to maximise returns. This can be seen in the increase in the investment portfolio from \$53.7 million in FY22 to \$64.8 million in FY23. This increase was also facilitated by an improved performance of financial markets during FY23. SCHF has a policy of holding unspecified reserves to allow the Foundation to sustain program grant levels regardless of market conditions, have sufficient working capital available to run the organisation, invest in new systems and respond to major strategic opportunities as they arise. All proposed grants were submitted and approved through the relevant sub-committees and Board according to policy. Specified/restricted reserves at 30 June 2023 of \$65.9 million are tagged for use as directed by donors and aim to be acquitted within a reasonable timeframe for the specified purposes.

Chart 1: Helping sick kids

Cents in the dollar raised to help sick kids and their families



- Funding for research, clinical care and patient experience
- Investment in fundraising
- Governance and administration residual costs

*Investment income offsets governance and administration residual costs, so no expenditure is dependent on investment performance of funds.

Chart 2: How you donated

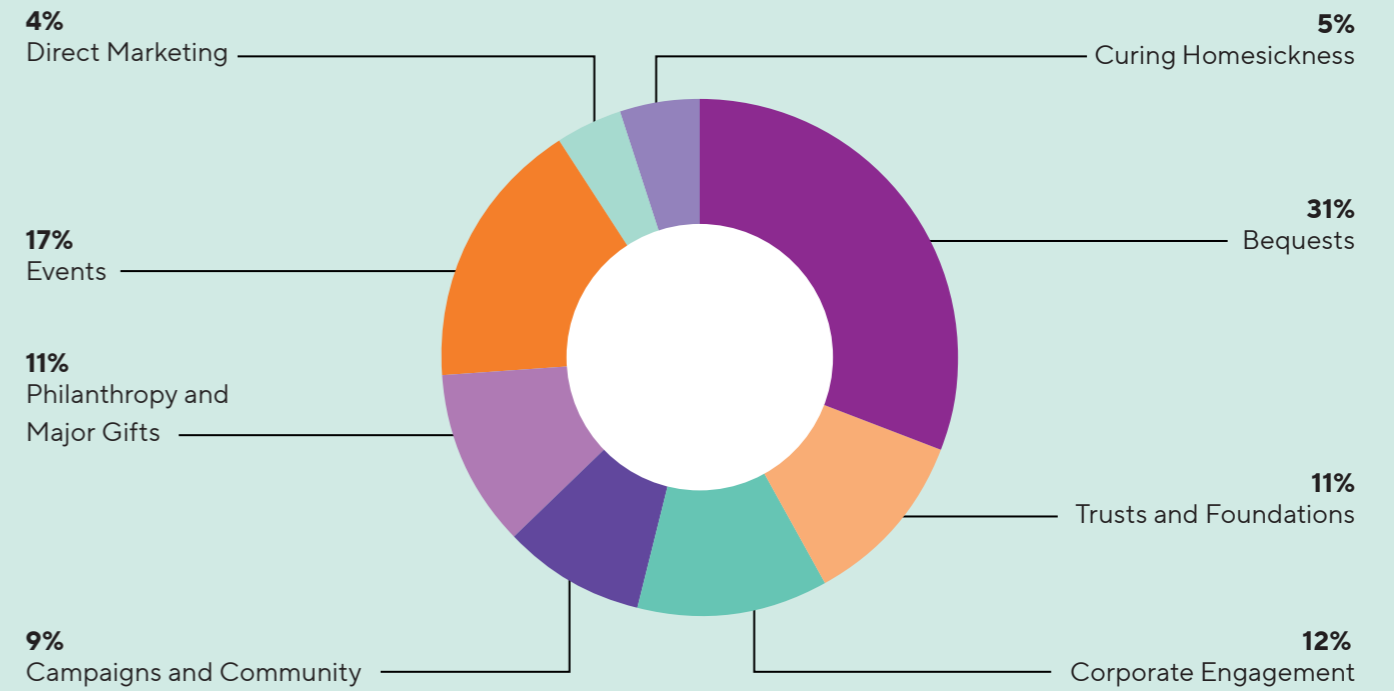
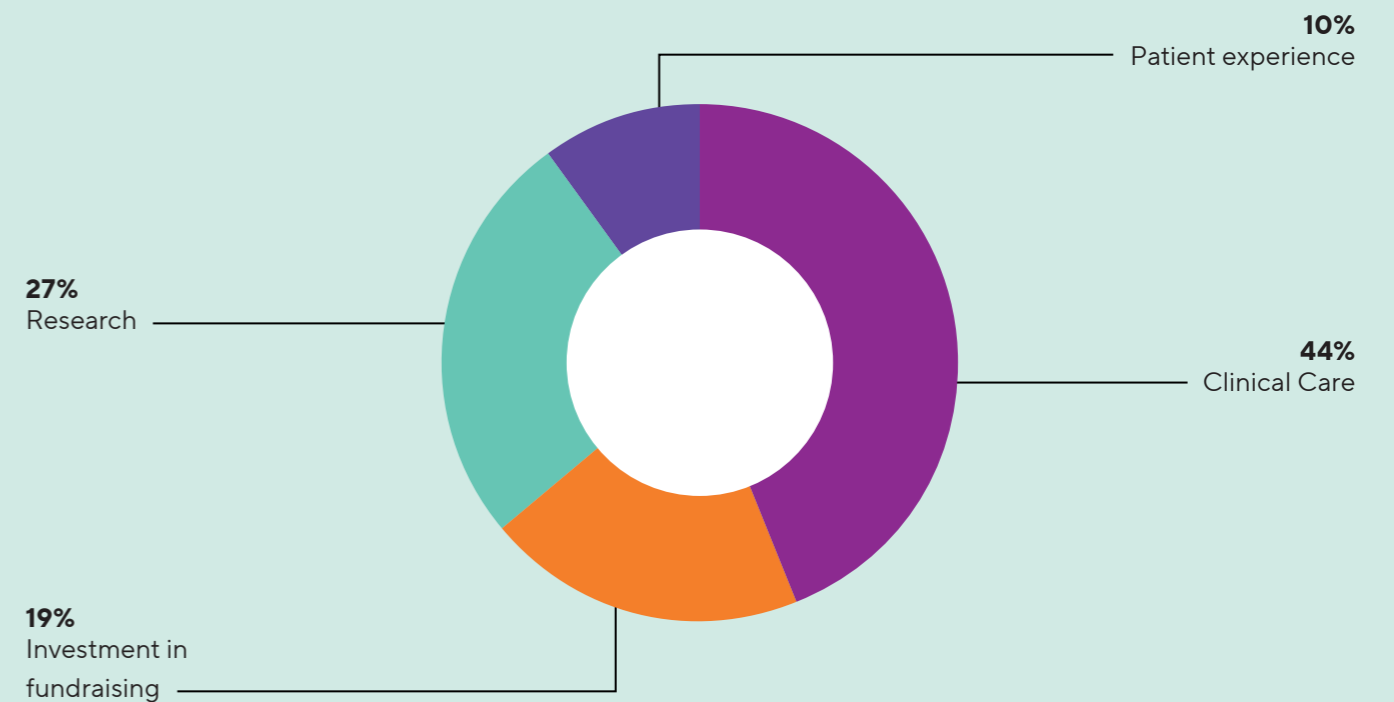


Chart 3: What your donations achieved



Regulatory Framework

The charitable purpose of Sydney Children’s Hospitals Foundation is to promote the prevention or management of childhood disease and injury, with a focus on kids and families receiving treatment in services provided by the Sydney Children’s Hospitals Network.

To deliver on this purpose, SCHF operates within the following legal and regulatory framework. We are committed to the highest standards of personal and corporate integrity. Good governance leads to better outcomes, and as SCHF continues to grow in size and complexity, we will maintain a robust corporate governance and risk management approach.

This means looking after our employees, wellbeing, building a culture of values-driven behaviour, and demonstrating high levels of accountability and transparency in all our relationships and financial transactions. We are an independent health promotion charity, registered with the Australian Taxation Office as an Item 1 Deductible Gift Recipient.

We are a company limited by guarantee, registered with the Australian Securities and Investments Commission. We are registered with the Australian Charities and Not-forprofits Commission and are an approved holder of the Registered Charity Tick. Our governance documents can be viewed at www.schf.org.au/governance.

Socially responsible investment

SCHF has a responsibility to ensure that our investment practices align with the expectations of our beneficiaries, our stakeholders and the broader community.

To align the investment mandate with these material issues, the Board has determined that SCHF will not make any direct investments in securities (companies) that derive sales revenues from:

- Tobacco production and distribution
- The use of child labour (as defined under relevant United Nations conventions)

If the Board concludes that an organisation is not behaving in a socially responsible manner, it reserves the right to instruct JBWere to specifically exclude this organisation and all associated holdings from SCHF’s investment portfolio.

In making these decisions, the Board and the ARC will consider the broader environmental, social and governance record of the company in question. They accept that excluding industries and specific stocks has the potential to limit the risk-adjusted return generated.

Our Board

Sydney Children’s Hospitals Foundation has an independent voluntary Board, which ensures SCHF is operating legally, ethically and responsibly. The purpose and activities of SCHF are defined in our Constitution, which guides the Board’s decisions and underpins our strategic direction. The profile of each of our Directors, including their tenure, is available at www.schf.org.au/our-people and included in our financial statements.

Investment policy

Through prudent management, SCHF has accumulated funds that are invested strategically to protect our long-term security and provide continuity in delivering positive outcomes for children’s health. The Board has ultimate fiduciary responsibility for managing these funds and has delegated authority to the Audit and Risk Committee (ARC) to ensure the funds are invested in line with SCHF’s purpose. JBWere manages the funds in accordance with an Investment Policy Statement.

Sydney Children’s Hospitals Foundation Board

Constitution
Len Chersky (Chair)

Audit, Risk & Investment Committee

Sub-committee
Danny Rezek (Chair)
Wayne Mo
Connie Carnabuci
Len Chersky

People, Culture and Nominations Committee

Sub-committee
James Brindley (Chair)
Elizabeth Crouch
Len Chersky

Fundraising & Brand Committee

Sub-committee
Anubha Sahasrabuddhe (Chair)
James Brindley
Dr Matthew O’Meara
Len Chersky

Foundation Giving and Impact Committee

Sub-committee
Elizabeth Curran (Chair)
Dr Matthew O’Meara
Wayne Mo
Len Chersky

Commercial Investments Committee

Sub-committee
Adhoc

Contact Us

Connect



Visit www.schf.org.au for more information about how you can get involved.

Connect with us on social media @schf.kids to be inspired every day by stories and news.

Phone

1800 770 122

Email

info@schf.org.au

Mailing address

Darug Country
Locked Bag 9002
Westmead NSW 2145
Australia

Registered office

Gadigal Country
77 King St
Sydney NSW 2000
Australia

Registered charity



Sydney Children's Hospitals Foundation is an independent Health Promotion Charity and registered as an Item 1 **Deductible Gift Recipient by the Australian Tax Office.**

ABN 72 003 073 185

Donate



With your help we can go all in to change children's health for all kids, always. Please use this QR code if you would like to make an online donation today.



